

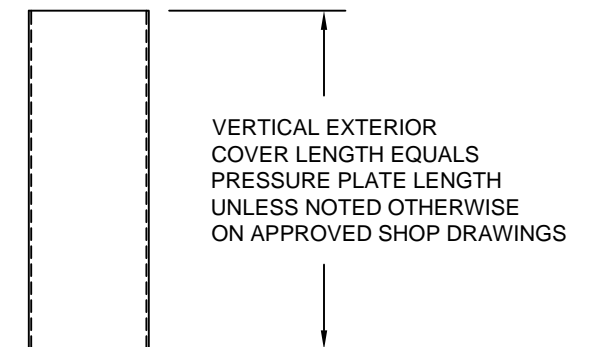
CONFIDENTIAL AND PROPRIETARY INFORMATION  
KAWNEER COMPANY INC.

THESE DRAWINGS ARE THE SOLE AND EXCLUSIVE PROPERTY OF KAWNEER AND CONTAIN SENSITIVE, PRIVILEGED OR CONFIDENTIAL INFORMATION WHICH MAY BE USED ONLY FOR ITS BENEFIT. THE DISCLOSURE OF THESE DRAWINGS TO UNAUTHORIZED PERSONS IS STRICTLY PROHIBITED. THIS DOCUMENT AND ALL COPIES MUST BE RETURNED UPON DEMAND.  
© COPYRIGHT KAWNEER COMPANY, INC., 2012

**EXTERIOR COVER FABRICATION**

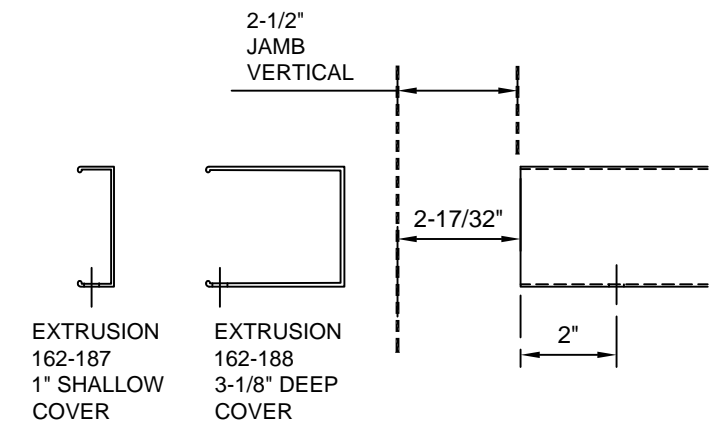
VERTICAL JAMB COVER

EXTRUSION  
162-187 1" SHALLOW COVER  
162-188 3-1/8" DEEP COVER



LENGTH OF HORIZONTAL COVER TO BE COORDINATED WITH THE PRESSURE PLATE LENGTH.

DETAIL AT JAMB VERTICAL



EXTRUSION  
162-187  
1" SHALLOW  
COVER

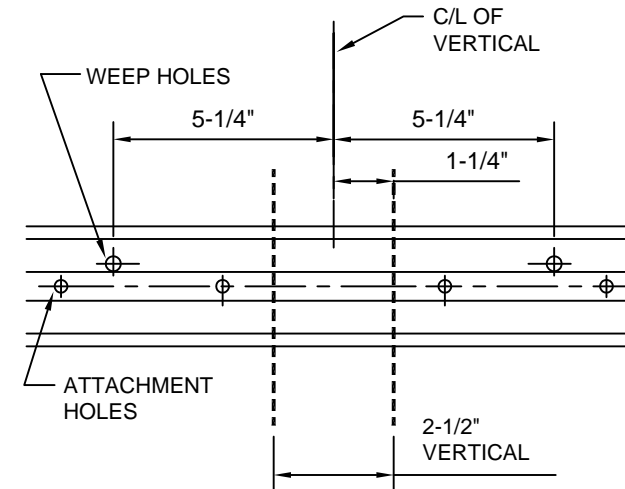
EXTRUSION  
162-188  
3-1/8" DEEP  
COVER

**KAWNEER** 1600 SYSTEM 2  
WITH VERSOLEIL  
OUTRIGGER SUNSHADE  
STOCK LENGTH INSTRUCTIONS

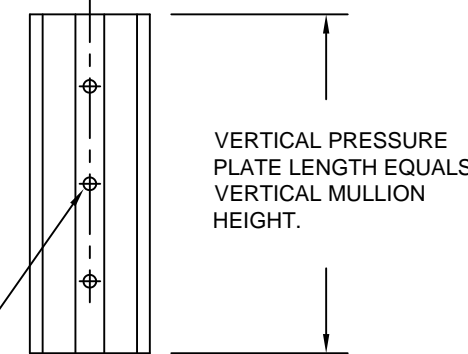
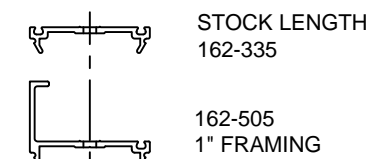
**PRESSURE PLATE FABRICATION**

DETAIL AT STRUCTURAL GLAZED VERTICAL  
WITHOUT PRESSURE PLATE SPLICE JOINT.

WEEP HOLES ARE TO BE LOCATED  
AS SHOWN. DRILL 5/16" DIA HOLES



VERTICAL JAMB PRESSURE PLATE

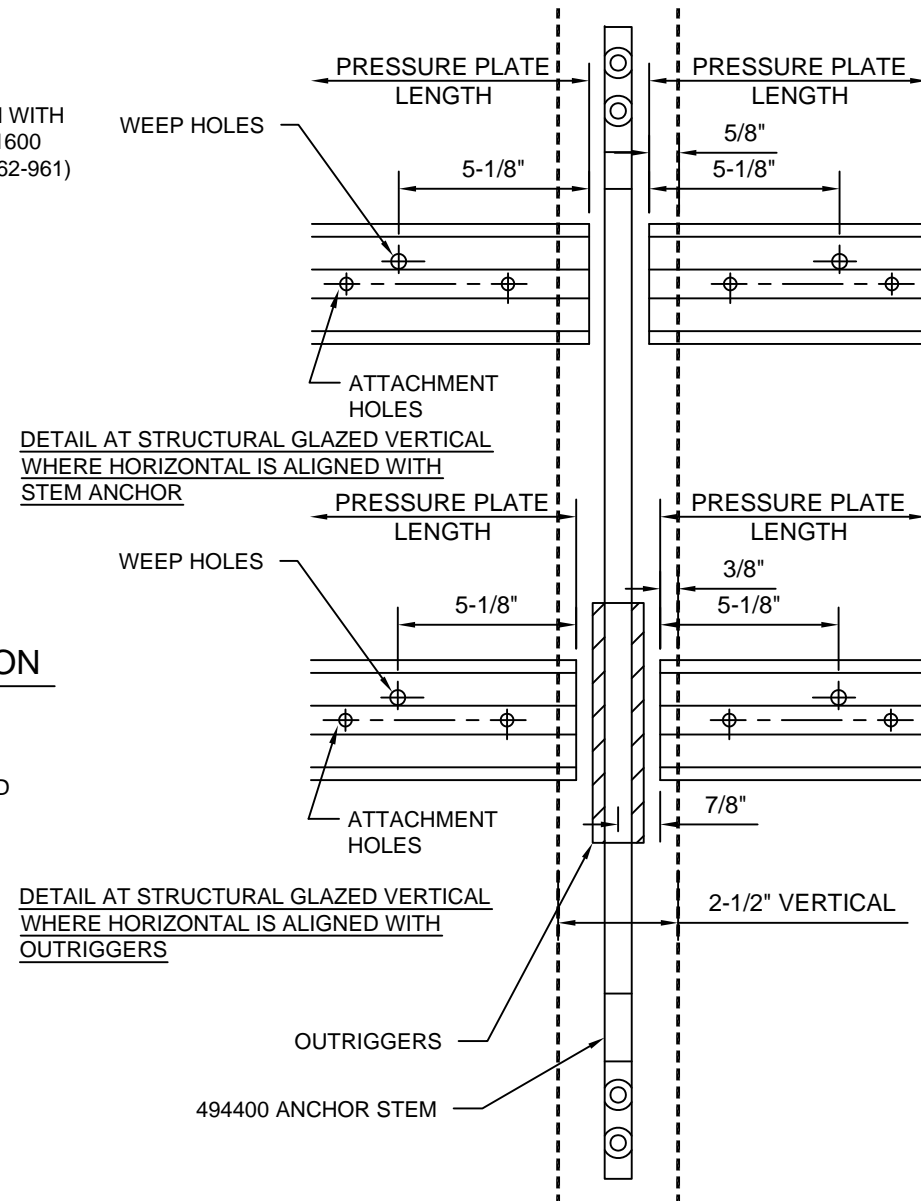


ATTACHMENT HOLES ARE FACTORY PUNCHED  
AT 3" ON CENTER. .266 DIA. (H DRILL).

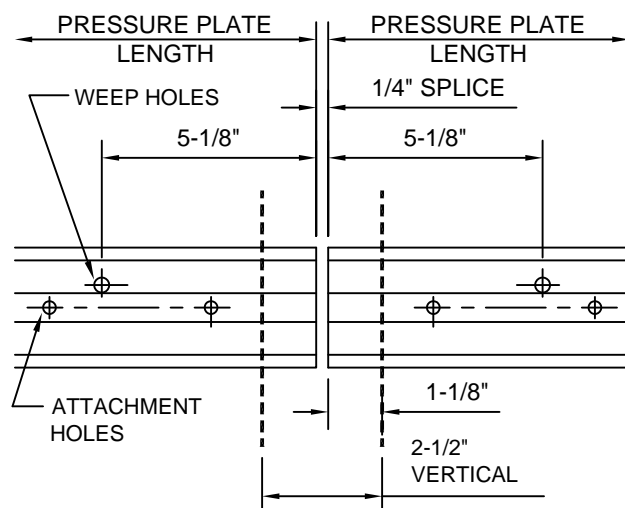
PRESSURE PLATE STOCK LENGTH NUMBER  
IS 162-335.

**GENERAL NOTES**

USE THESE INSTRUCTIONS IN CONJUNCTION WITH  
INSTALLATION INSTRUCTIONS (494975) AND 1600  
SYSTEM 2 STOCK LENGTH INSTRUCTIONS (162-961)



DETAIL AT STRUCTURAL GLAZED VERTICAL  
WITH PRESSURE PLATE SPLICE JOINT.

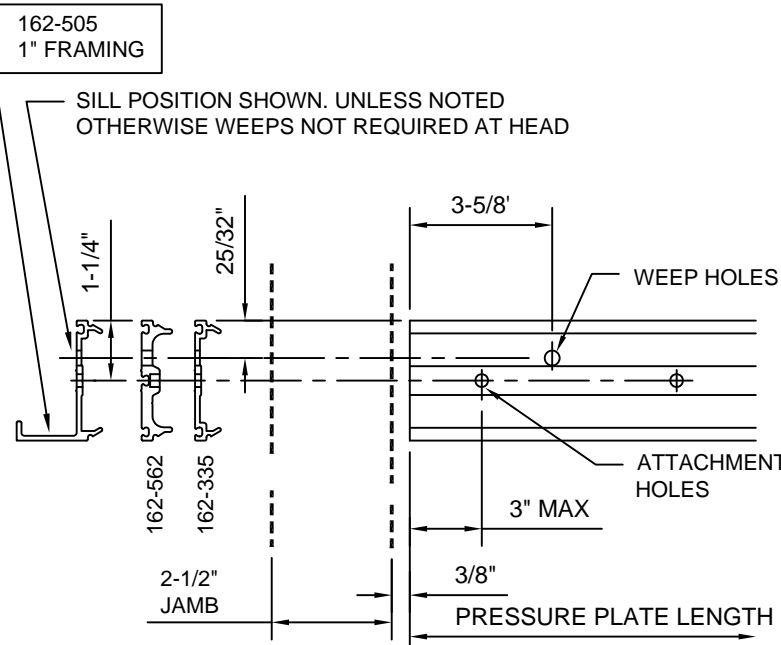


**PRESSURE PLATE FABRICATION**

LENGTH OF HORIZONTAL PRESSURE PLATE  
NOT TO EXCEED 3 LITES OR APPROX. 15'-0".  
ATTACHMENT HOLES ARE FACTORY PUNCHED  
AT 3" ON CENTER. 0.266 DIA. (H DRILL).

DETAIL AT JAMB VERTICAL

WEEP HOLES ARE TO BE LOCATED  
AS SHOWN. DRILL 5/16" DIA HOLES



162-505  
1" FRAMING

SILL POSITION SHOWN. UNLESS NOTED  
OTHERWISE WEEPS NOT REQUIRED AT HEAD

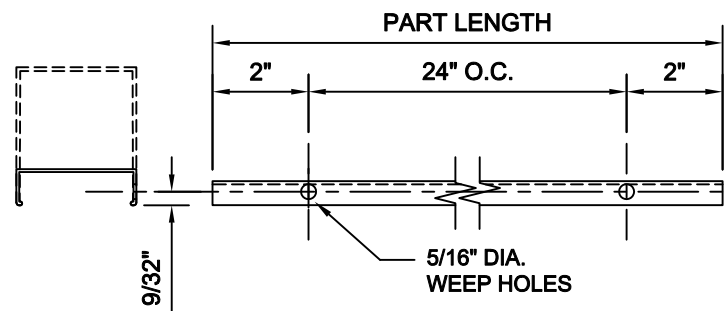
162-562  
162-335

2-1/2"  
JAMB

### EXTERIOR COVER FABRICATION

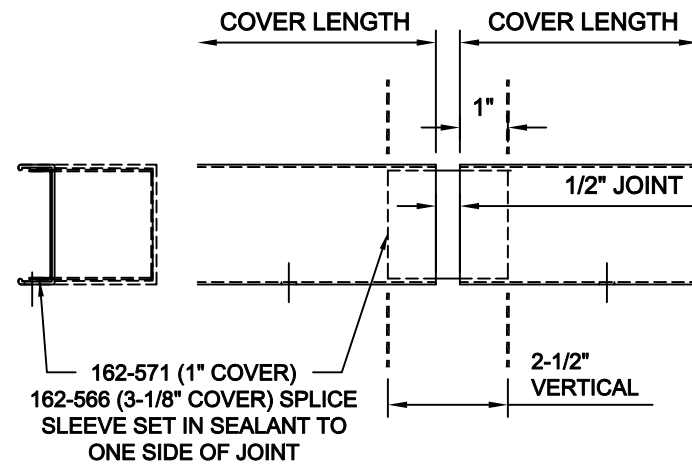
#### HORIZONTAL COVER PREP FOR WEEPS

LOCATE HORIZONTAL COVER SPLICE EVERY THIRD LITE OR 15'



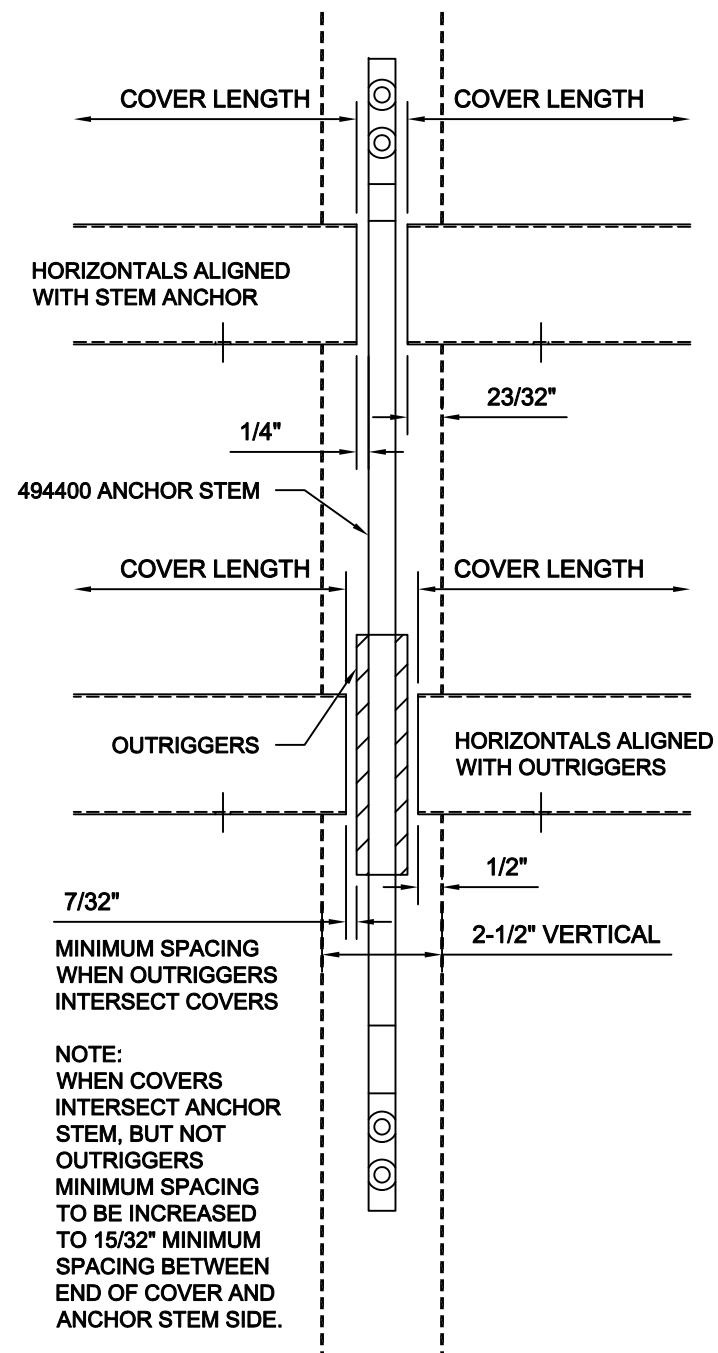
162-187 SHOWN  
162-188 SIMILAR

#### DETAIL AT STRUCTURAL GLAZED VERTICAL WITH COVER SPLICE JOINT.



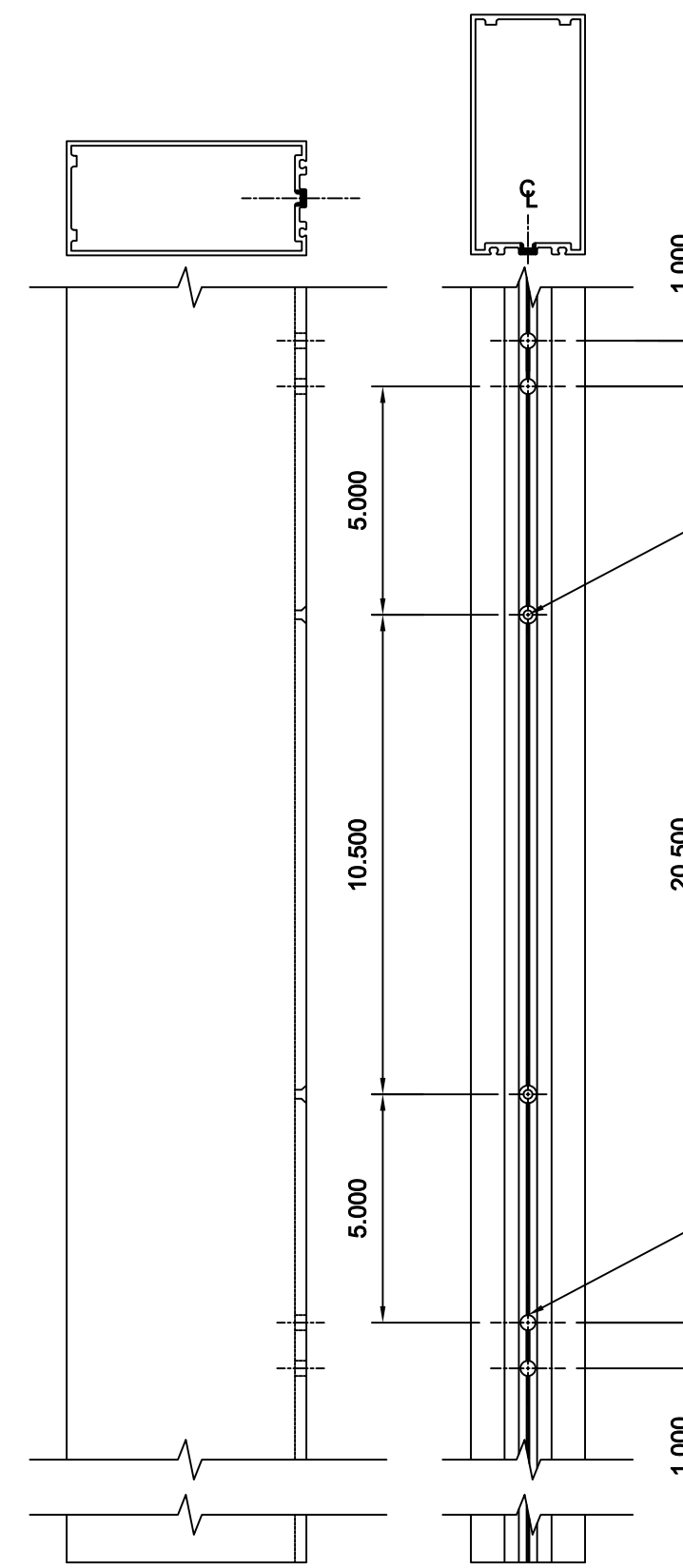
162-571 (1" COVER)  
162-566 (3-1/8" COVER) SPLICE SLEEVE SET IN SEALANT TO ONE SIDE OF JOINT

### DETAIL AT STRUCTURAL GLAZED VERTICAL INTERMEDIATES



NOTE:  
WHEN COVERS INTERSECT ANCHOR STEM, BUT NOT OUTRIGGERS  
MINIMUM SPACING TO BE INCREASED TO 15/32" MINIMUM SPACING BETWEEN END OF COVER AND ANCHOR STEM SIDE.

### VERTICAL MULLION FABRICATION



162027 SHOWN  
162025 SIMILAR 162026 SIMILAR  
162028 SIMILAR 162076 SIMILAR  
494018 SIMILAR 494019 SIMILAR  
494020 SIMILAR 494021 SIMILAR

CONFIDENTIAL AND PROPRIETARY INFORMATION  
KAWNEER COMPANY INC.

THESE DRAWINGS ARE THE SOLE AND EXCLUSIVE PROPERTY OF KAWNEER AND CONTAIN SENSITIVE, PRIVILEGED OR CONFIDENTIAL INFORMATION WHICH MAY BE USED ONLY FOR ITS BENEFIT. THE DISCLOSURE OF THESE DRAWINGS TO UNAUTHORIZED PERSONS IS STRICTLY PROHIBITED. THIS DOCUMENT AND ALL COPIES MUST BE RETURNED UPON DEMAND.  
© COPYRIGHT KAWNEER COMPANY, INC., 2012

REFERENCE APPROVED SHOP DRAWINGS FOR VERTICAL LENGTHS AND HORIZONTAL LOCATIONS AND 162-961 1600 SYSTEM 2 STOCK LENGTH INSTRUCTIONS FOR SHEAR BLOCK PREP LOCATIONS.

DRILL 0.196" [9 DRILL] HOLE THROUGH ALL OF MULLION CTSK FOR #10-24 FH (2 PLACES)

**GENERIC FORMULA FOR CENTER POSITION OF TOP BOLT ("Y") ON ANCHOR STEM:**  
**"Y" = "X" + 11.25"**

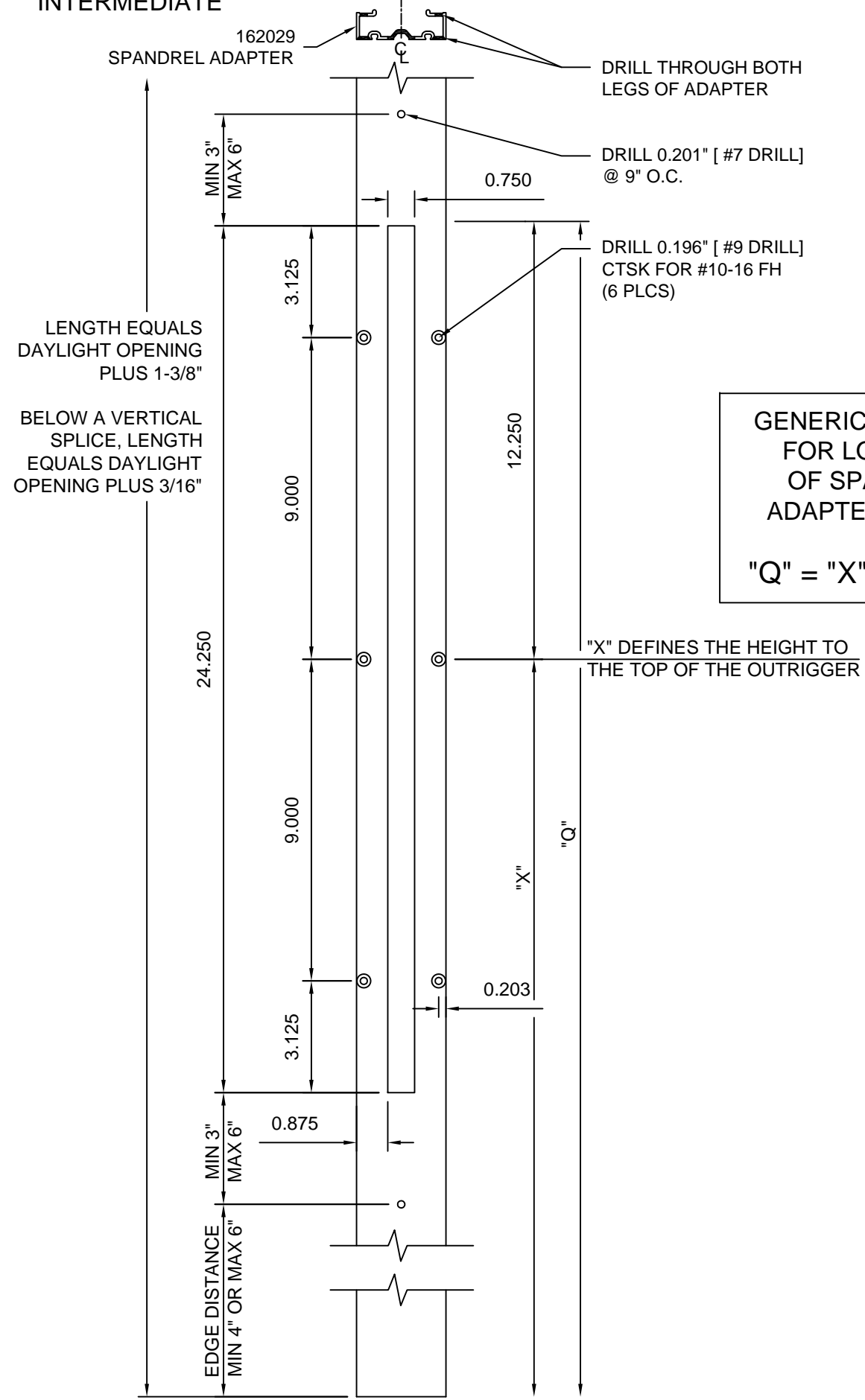
"X" DEFINES THE HEIGHT TO THE TOP OF THE OUTRIGGER

DRILL 0.332" [Q DRILL] CLEAR HOLE THROUGH WALL OF MULLION (4 PLACES)

**KAWNEER** 1600 SYSTEM 2 WITH VERSOLEIL OUTRIGGER SUNSHADE STOCK LENGTH INSTRUCTIONS

**VERTICAL SPANDREL ADAPTER FABRICATION**

**INTERMEDIATE**

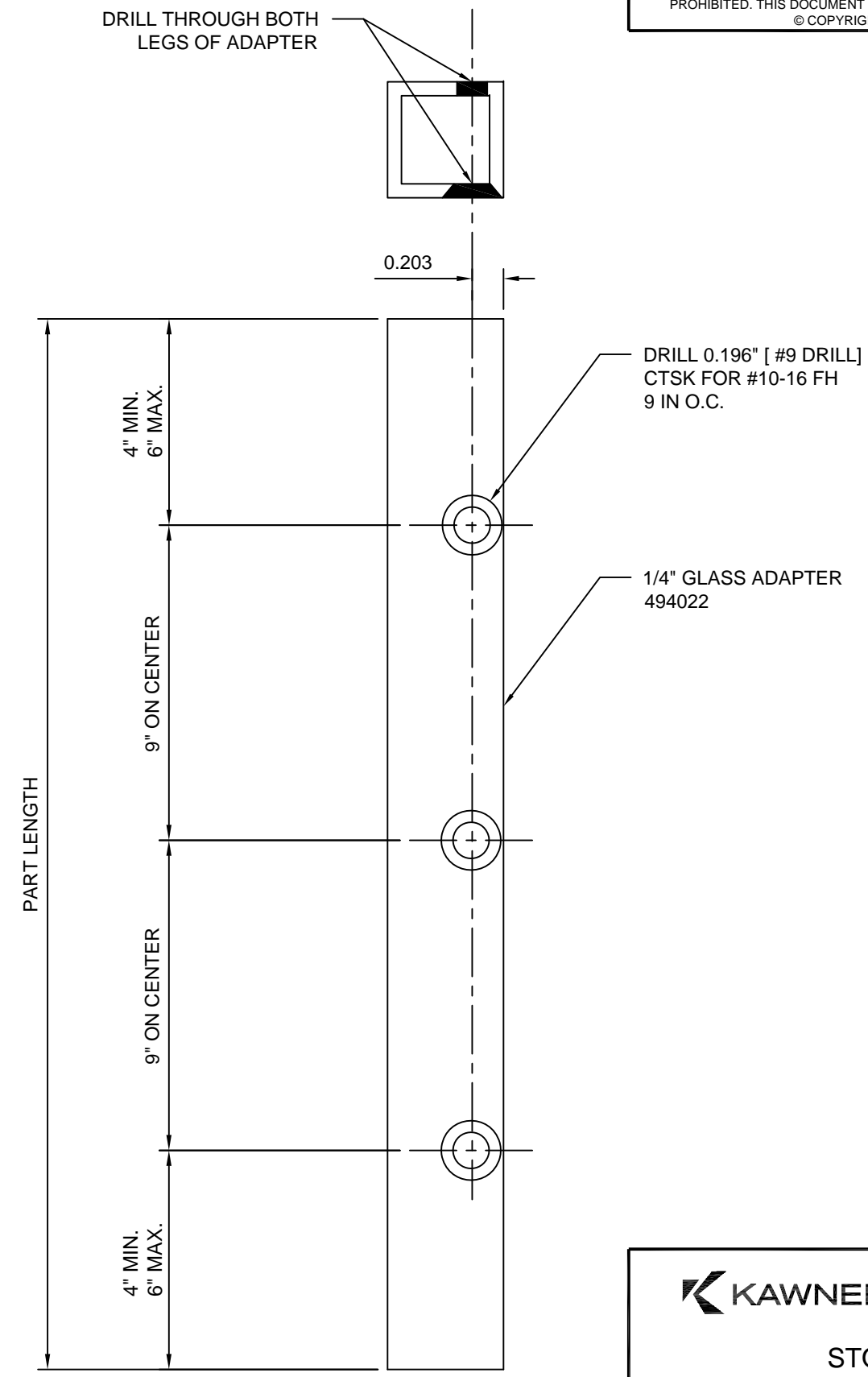


GENERIC FORMULA FOR LOCATION OF SPANDREL ADAPTER NOTCH:  
 $"Q" = "X" + 12.250"$

LENGTH EQUALS DAYLIGHT OPENING PLUS 1-3/8"  
 BELOW A VERTICAL SPLICE, LENGTH EQUALS DAYLIGHT OPENING PLUS 3/16"

**VERTICAL SPANDREL ADAPTER FABRICATION**

**INTERMEDIATE - INTERSECTING HORIZONTALS**



494976 (SHEET 03 OF 06)

CONFIDENTIAL AND PROPRIETARY INFORMATION  
 KAWNEER COMPANY INC.

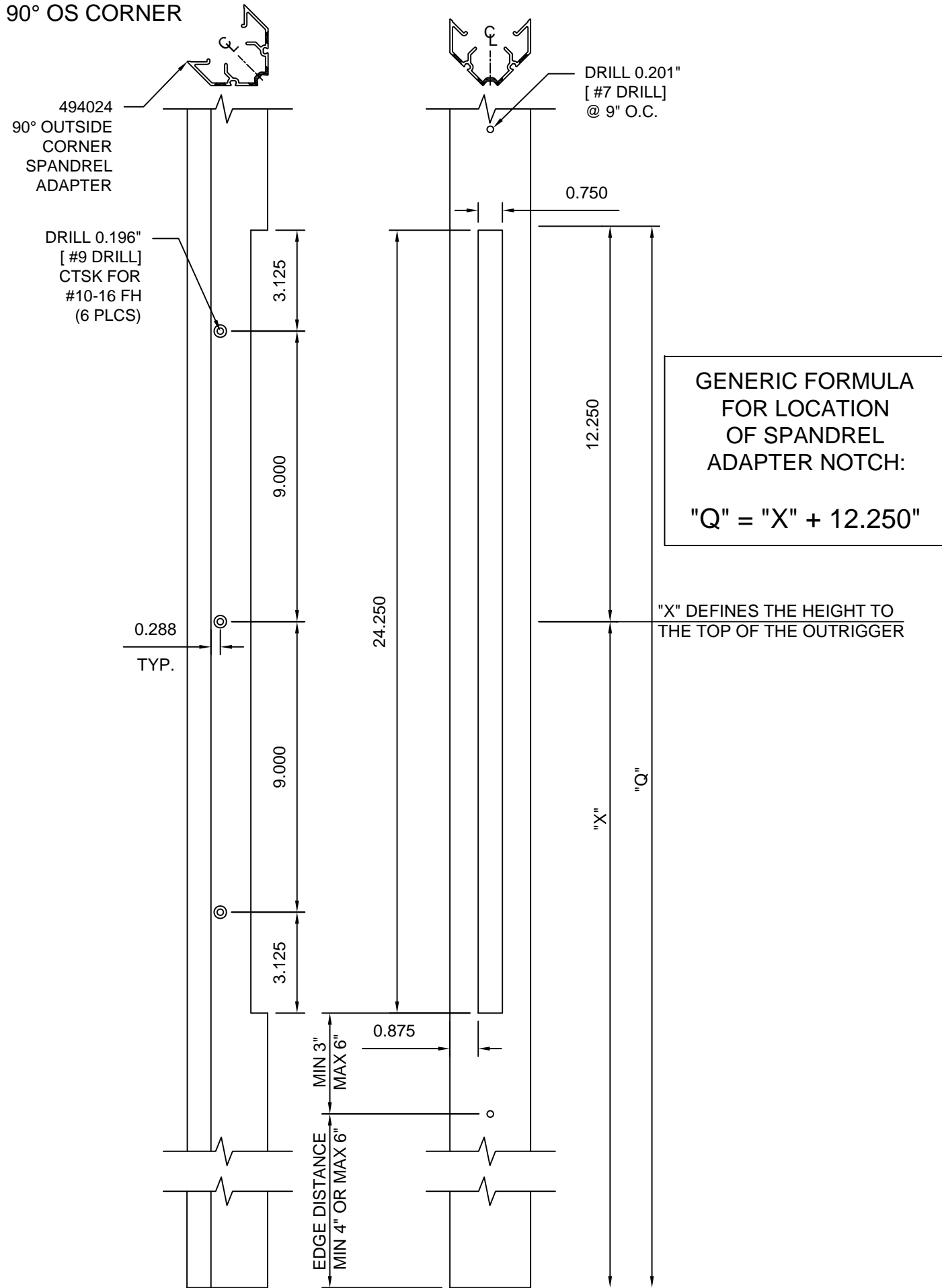
THESE DRAWINGS ARE THE SOLE AND EXCLUSIVE PROPERTY OF KAWNEER AND CONTAIN SENSITIVE, PRIVILEGED OR CONFIDENTIAL INFORMATION WHICH MAY BE USED ONLY FOR ITS BENEFIT. THE DISCLOSURE OF THESE DRAWINGS TO UNAUTHORIZED PERSONS IS STRICTLY PROHIBITED. THIS DOCUMENT AND ALL COPIES MUST BE RETURNED UPON DEMAND.  
 © COPYRIGHT KAWNEER COMPANY, INC., 2012

	1600 SYSTEM 2 WITH VERSOLEIL OUTRIGGER SUNSHADE STOCK LENGTH INSTRUCTIONS
	95494-32 07/09/12

494976 (SHEET 03 OF 06)

VERTICAL SPANDREL ADAPTER FABRICATION

90° OS CORNER

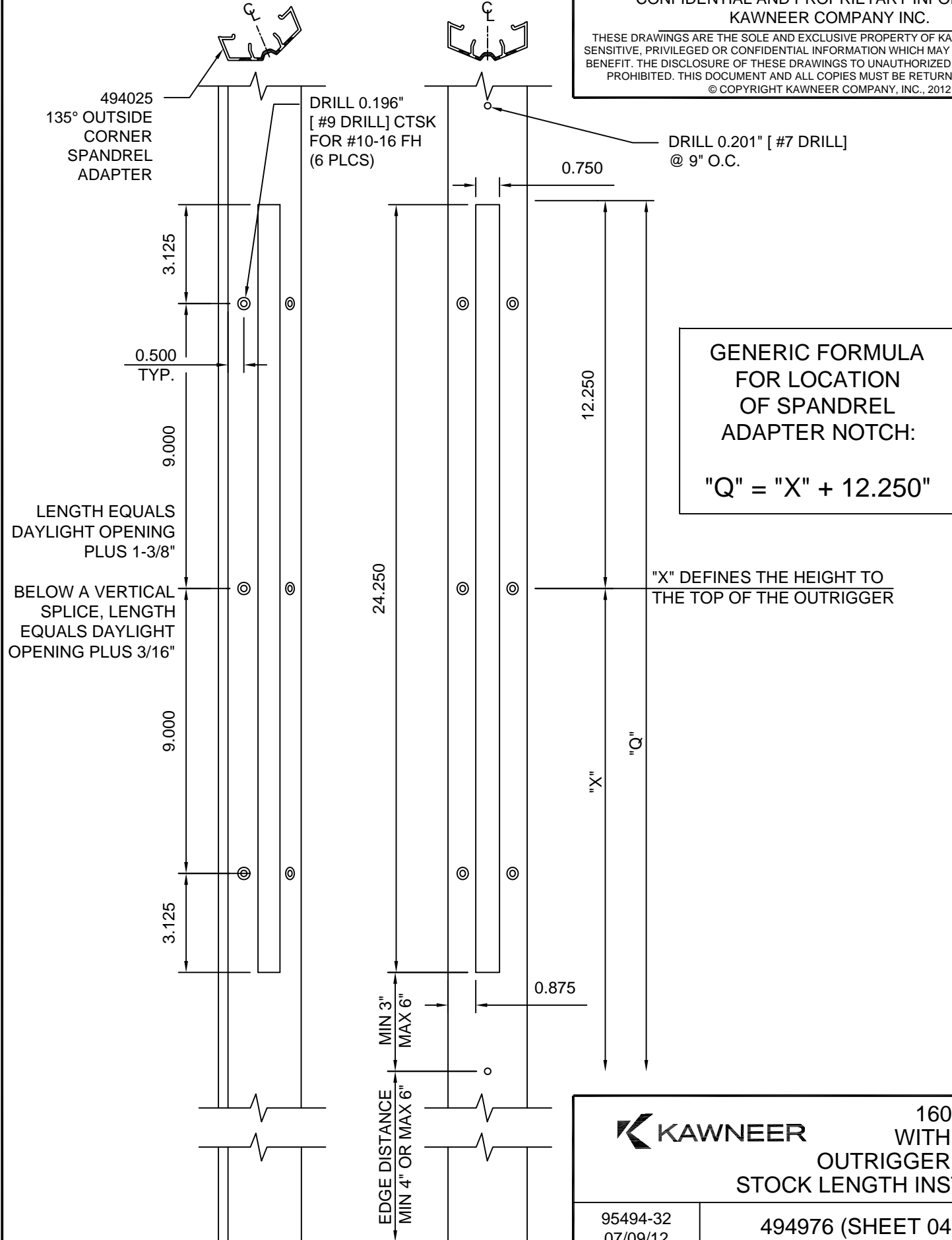


GENERIC FORMULA FOR LOCATION OF SPANDREL ADAPTER NOTCH:  
 $"Q" = "X" + 12.250"$

"X" DEFINES THE HEIGHT TO THE TOP OF THE OUTRIGGER

VERTICAL SPANDREL ADAPTER FABRICATION

135° OS CORNER



GENERIC FORMULA FOR LOCATION OF SPANDREL ADAPTER NOTCH:  
 $"Q" = "X" + 12.250"$

LENGTH EQUALS DAYLIGHT OPENING PLUS 1-3/8"

BELOW A VERTICAL SPLICE, LENGTH EQUALS DAYLIGHT OPENING PLUS 3/16"

"X" DEFINES THE HEIGHT TO THE TOP OF THE OUTRIGGER

494976 (SHEET 04 OF 06)  
 CONFIDENTIAL AND PROPRIETARY INFORMATION  
 KAWNEER COMPANY INC.  
 THESE DRAWINGS ARE THE SOLE AND EXCLUSIVE PROPERTY OF KAWNEER AND CONTAIN SENSITIVE, PRIVILEGED OR CONFIDENTIAL INFORMATION WHICH MAY BE USED ONLY FOR ITS BENEFIT. THE DISCLOSURE OF THESE DRAWINGS TO UNAUTHORIZED PERSONS IS STRICTLY PROHIBITED. THIS DOCUMENT AND ALL COPIES MUST BE RETURNED UPON DEMAND.  
 © COPYRIGHT KAWNEER COMPANY, INC., 2012

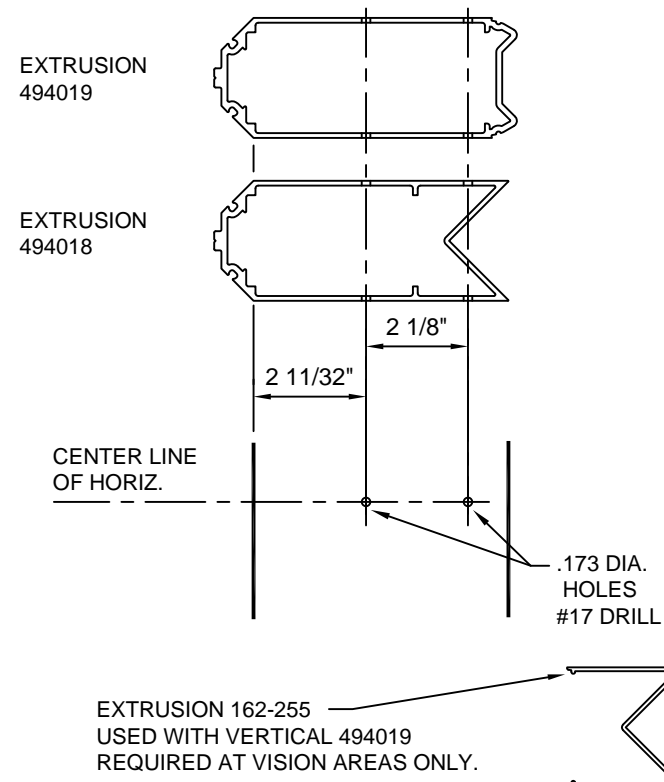
**KAWNEER** 1600 SYSTEM 2 WITH VERSOLEIL  
 OUTRIGGER SUNSHADE STOCK LENGTH INSTRUCTIONS

CONFIDENTIAL AND PROPRIETARY INFORMATION  
KAWNEER COMPANY INC.

THESE DRAWINGS ARE THE SOLE AND EXCLUSIVE PROPERTY OF KAWNEER AND CONTAIN SENSITIVE, PRIVILEGED OR CONFIDENTIAL INFORMATION WHICH MAY BE USED ONLY FOR ITS BENEFIT. THE DISCLOSURE OF THESE DRAWINGS TO UNAUTHORIZED PERSONS IS STRICTLY PROHIBITED. THIS DOCUMENT AND ALL COPIES MUST BE RETURNED UPON DEMAND.  
© COPYRIGHT KAWNEER COMPANY, INC., 2012

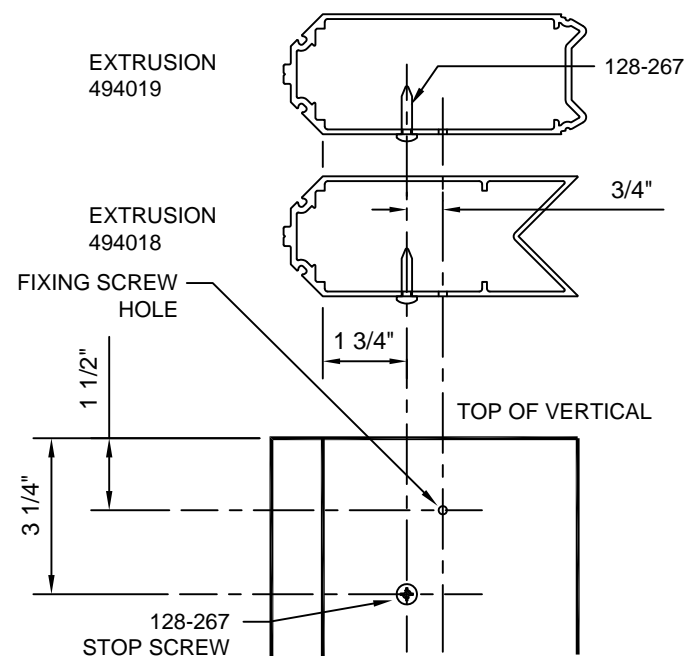
**90° OUTSIDE CORNER**

VERTICAL MULLION PREP



SPLICE SLEEVE FIXING AND STOP SCREWS

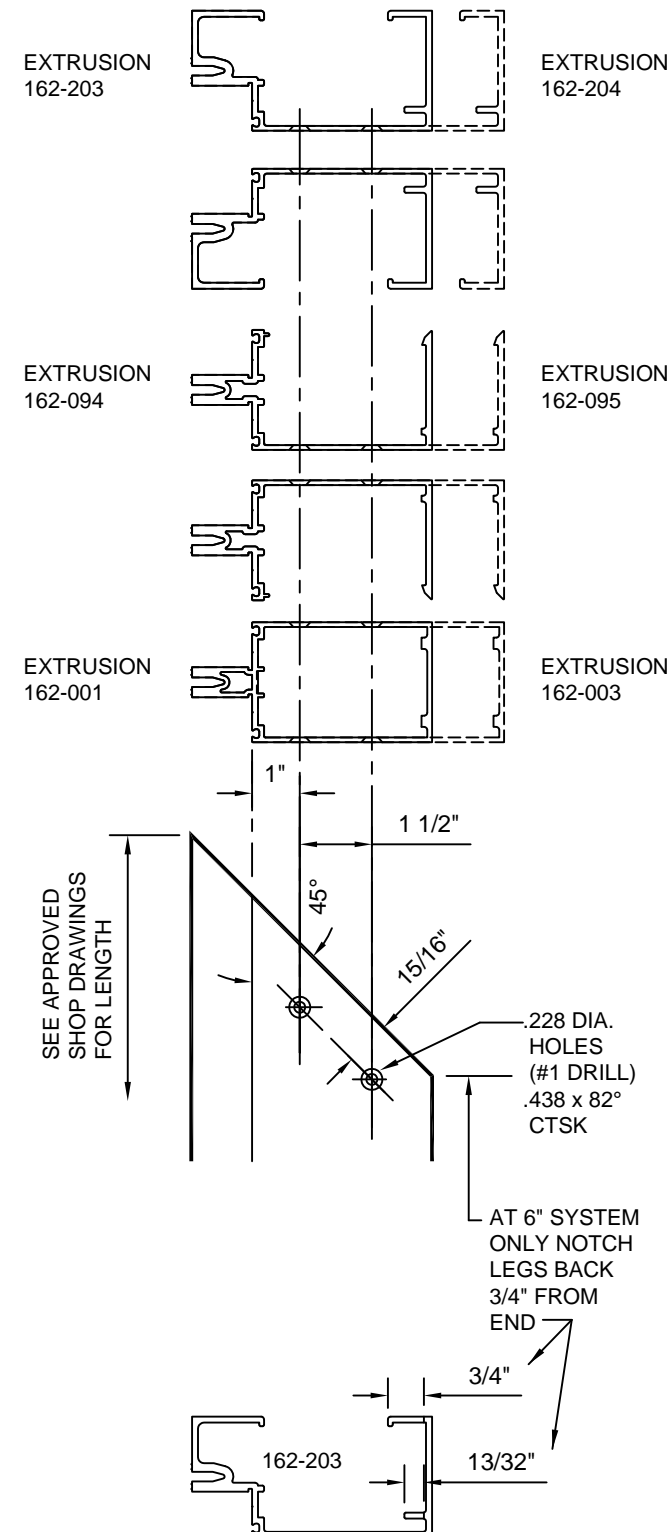
DRILL TWO .173 DIA. HOLES (#17 DRILL) AS SHOWN. THE TOP HOLE WILL BE FOR THE SLEEVE FIXING SCREW. INSTALL STOP SCREW 128-267 IN THE BOTTOM HOLE.



**90° OUTSIDE CORNER**

HORIZONTAL END PREP

NOTE:  
USE TUBULAR HORIZONTALS WHERE POSSIBLE. WHEN USING OPEN BACK HORIZONTALS AT CORNER MULLIONS, OPEN BACK FILLER AND HORIZONTAL MAY INTERFERE WITH SHEAR BLOCK. NOTCH PARTS FOR CLEARANCE AS NECESSARY.



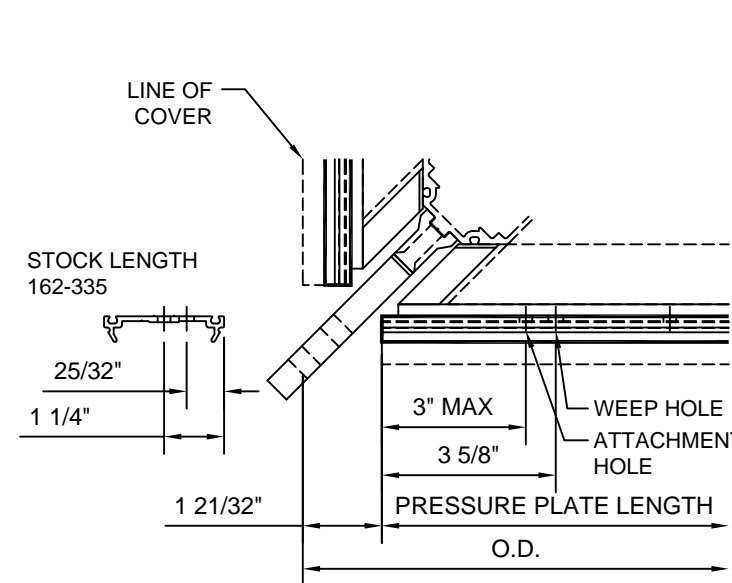
**90° OUTSIDE CORNER**

LENGTH OF HORIZONTAL PRESSURE PLATE NOT TO EXCEED 3 LITES OR APPROX. 15'-0".

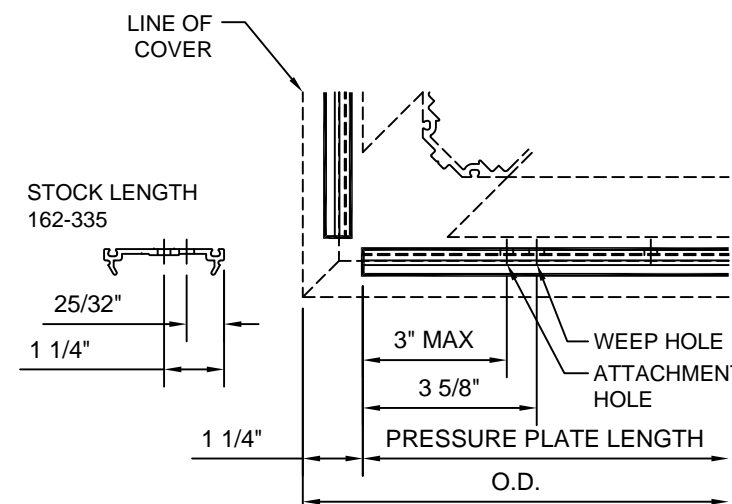
ATTACHMENT HOLES ARE FACTORY PUNCHED AT 3" O.C. 0.266 DIA. (H DRILL)

WEEP HOLES ARE TO BE LOCATED AS SHOWN UNLESS NOTED OTHERWISE. WEEPS NOT REQUIRED AT HEAD. DRILL 5/16" DIA. HOLES.

HORIZONTAL PRESSURE PLATE FABRICATION INTERSECTING HORIZONTALS

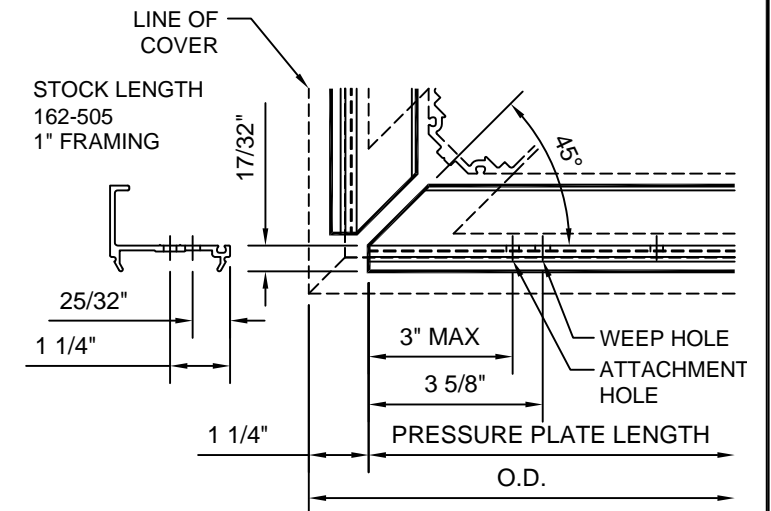


HORIZONTAL PRESSURE PLATE FABRICATION VERTICALS ONLY



**90° OUTSIDE CORNER**

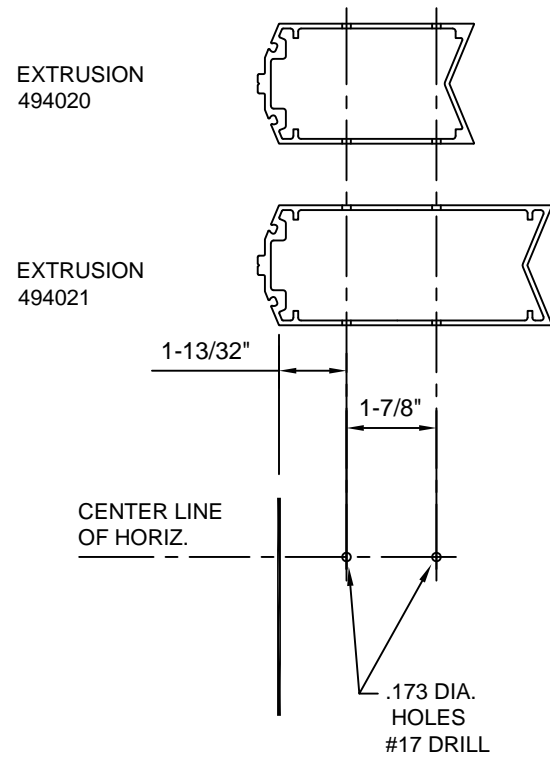
HORIZONTAL PRESSURE PLATE FABRICATION PERIMETERS



1600 SYSTEM 2  
WITH VERSOLEIL  
OUTRIGGER SUNSHADE  
STOCK LENGTH INSTRUCTIONS

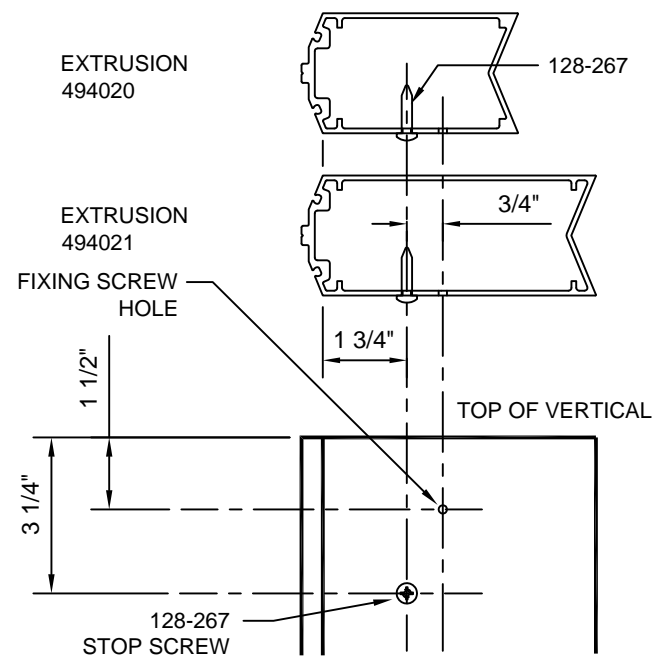
### 135° OUTSIDE CORNER

#### VERTICAL MULLION PREP



#### SPLICE SLEEVE FIXING AND STOP SCREWS

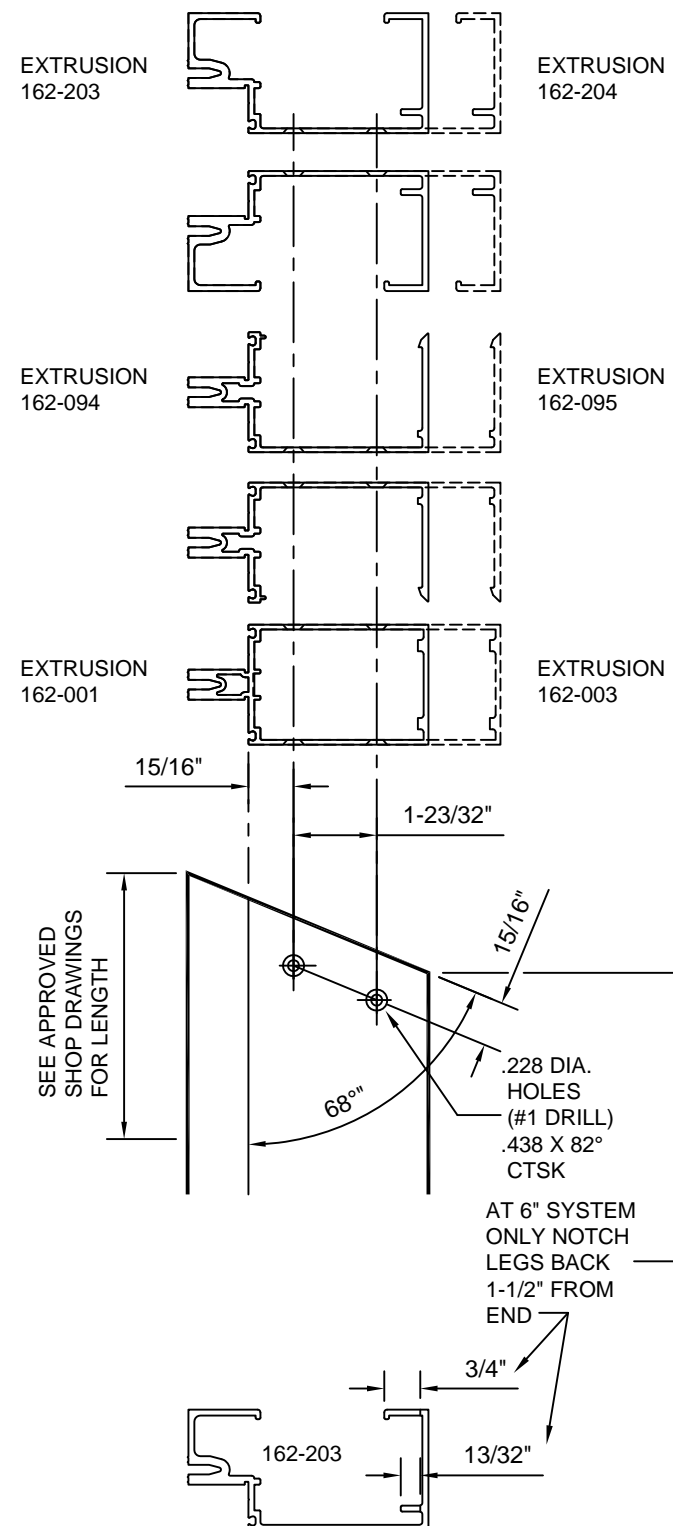
DRILL TWO .173 DIA. HOLES (#17 DRILL) AS SHOWN. THE TOP HOLE WILL BE FOR THE SLEEVE FIXING SCREW. INSTALL STOP SCREW 128-267 IN THE BOTTOM HOLE.



### 135° OUTSIDE CORNER

#### HORIZONTAL END PREP

NOTE:  
USE TUBULAR HORIZONTALS WHERE POSSIBLE. WHEN USING OPEN BACK HORIZONTALS AT CORNER MULLIONS, OPEN BACK FILLER AND HORIZONTAL MAY INTERFERE WITH SHEAR BLOCK. NOTCH PARTS FOR CLEARANCE AS NECESSARY.



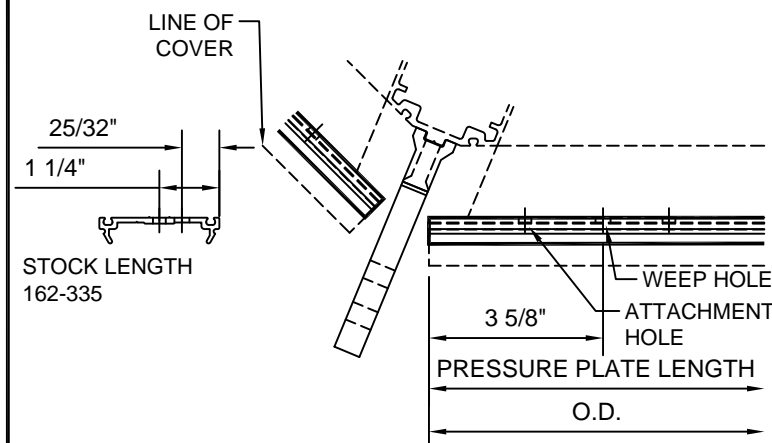
### 135° OUTSIDE CORNER

LENGTH OF HORIZONTAL PRESSURE PLATE NOT TO EXCEED 3 LITES OR APPROX. 15'-0".

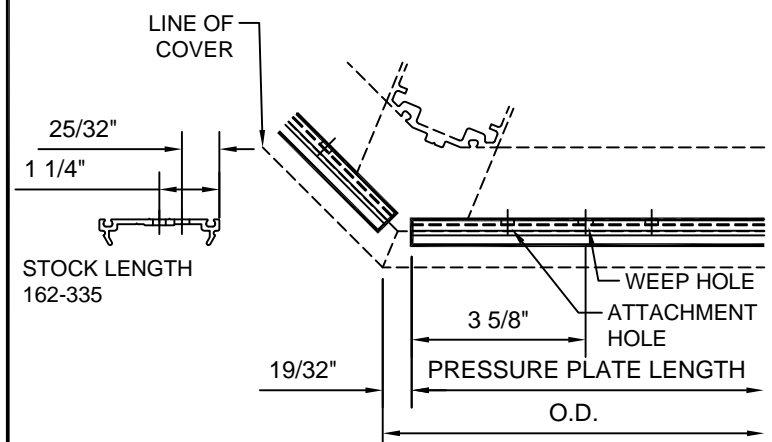
ATTACHMENT HOLES ARE FACTORY PUNCHED AT 3" O.C. 0.266 DIA. (H DRILL)

WEEP HOLES ARE TO BE LOCATED AS SHOWN UNLESS NOTED OTHERWISE. WEEPS NOT REQUIRED AT HEAD. DRILL 5/16" DIA. HOLES.

#### HORIZONTAL PRESSURE PLATE FABRICATION INTERSECTING HORIZONTALS



#### HORIZONTAL PRESSURE PLATE FABRICATION VERTICALS ONLY



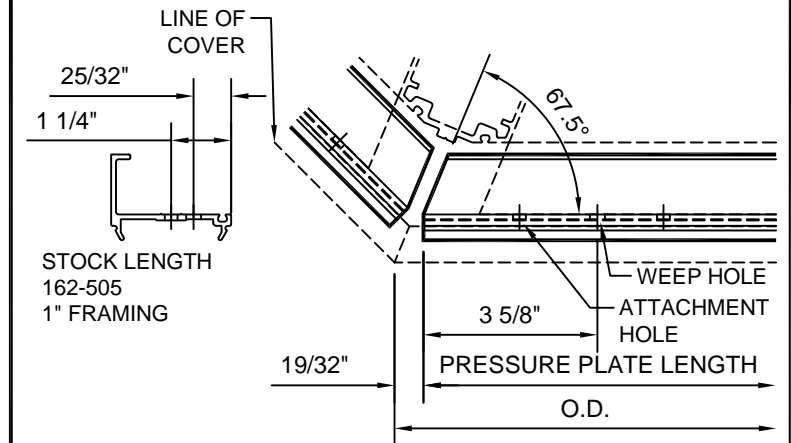
494976 (SHEET 06 OF 06)

CONFIDENTIAL AND PROPRIETARY INFORMATION  
KAWNEER COMPANY INC.

THESE DRAWINGS ARE THE SOLE AND EXCLUSIVE PROPERTY OF KAWNEER AND CONTAIN SENSITIVE, PRIVILEGED OR CONFIDENTIAL INFORMATION WHICH MAY BE USED ONLY FOR ITS BENEFIT. THE DISCLOSURE OF THESE DRAWINGS TO UNAUTHORIZED PERSONS IS STRICTLY PROHIBITED. THIS DOCUMENT AND ALL COPIES MUST BE RETURNED UPON DEMAND.  
© COPYRIGHT KAWNEER COMPANY, INC., 2012

### 135° OUTSIDE CORNER

#### HORIZONTAL PRESSURE PLATE FABRICATION PERIMETERS



**KAWNEER**

1600 SYSTEM 2  
WITH VERSOLEIL  
OUTRIGGER SUNSHADE  
STOCK LENGTH INSTRUCTIONS

95494-32  
07/09/12

494976 (SHEET 06 OF 06)