

USE THESE INSTRUCTIONS IN CONJUNCTION WITH INSTALLATION INSTRUCTIONS 171910.

## PERIMETER ANCHORING

TO CALCULATE END REACTIONS

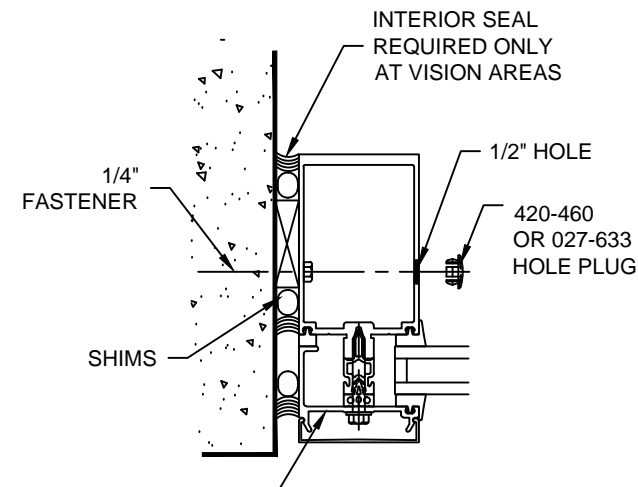
$$\frac{\text{MODULE(FT)} \times \text{LENGTH(FT)} \times \text{WIND LOAD(PSF)}}{2}$$

EQUALS END REACTION IN POUNDS

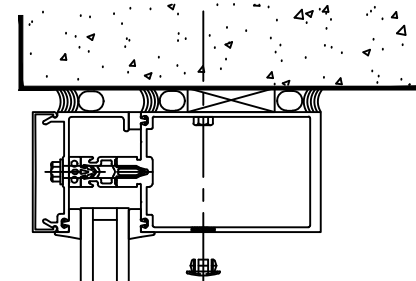
EXAMPLE:  $\frac{5' \times 7' \times 20 \text{ PSF}}{2} = 350\#$

**A** IF THE END REACTION IS 750# OR LESS THE FOLLOWING PERIMETER ANCHORING CAN BE USED.

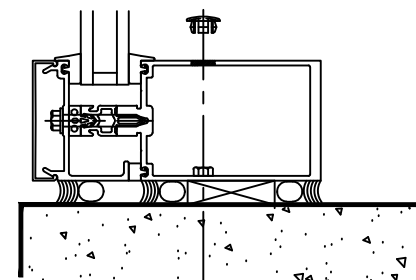
DRILL 1/2" DIA. HOLE FOR HOLE PLUGS.  
DRILL CLEARANCE HOLE FOR 1/4" FASTENER.  
MAXIMUM FASTENER SPACING IS 24".  
SEE BELOW FOR ADDITIONAL HEAD AND SILL FASTENERS.



PERIMETER PRESSURE PLATE  
162-505 1" FRAMING  
171301 1-3/4" FRAMING  
REFERENCE FABRICATION  
DETAILS SHEET #2.

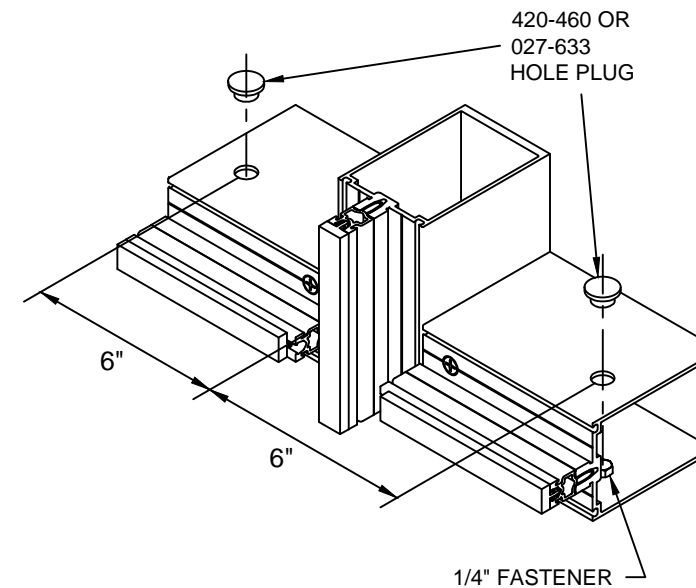


AT PERIMETER PRESSURE PLATES AND PRIMARY SEAL AT PRESSURE PLATE ONLY TOP AND BOTTOM END CAPS REQUIRED FOR ALL VERTICALS  
REFERENCE INSTRUCTIONS 171910



**A** IF THE END REACTION IS 350# TO 750# THE FOLLOWING PERIMETER ANCHORING CAN BE USED.

AT THE HEAD AND SILL, INSTALL FASTENERS 6" EACH SIDE OF VERTICALS AND NO MORE THAN 24" ON CENTER. AT LEAST 3 FASTENERS ARE REQUIRED PER LITE OPENING.



LAST BAY HORIZ. REQUIRES NOTCH. REFERENCE DETAILS SHEET #5.

THIS ANCHORING PROVIDES ADEQUATE SUPPORT FOR THE WALL PROVIDED THE END REACTION AT THE VERTICALS DOES NOT EXCEED 750#. HOWEVER, THE PERIMETER STRUCTURE AND THE PERIMETER FASTENERS ABILITY TO CARRY THE LOAD MUST BE CHECKED PER JOB. CONTACT FACTORY ENGINEERING FOR ASSISTANCE.

PERIMETER PRESSURE PLATES CAN BE USED WITH "F" AND "T" ANCHORS  
REFERENCE SHEET #2

CONFIDENTIAL AND PROPRIETARY INFORMATION  
KAWNEER COMPANY INC.

THESE DRAWINGS ARE THE SOLE AND EXCLUSIVE PROPERTY OF KAWNEER AND CONTAIN SENSITIVE, PRIVILEGED OR CONFIDENTIAL INFORMATION WHICH MAY BE USED ONLY FOR ITS BENEFIT. THE DISCLOSURE OF THESE DRAWINGS TO UNAUTHORIZED PERSONS IS STRICTLY PROHIBITED. THIS DOCUMENT AND ALL COPIES MUST BE RETURNED UPON DEMAND.  
© COPYRIGHT KAWNEER COMPANY, INC., 2011



1600UT SYSTEM 1  
STOCK LENGTH  
INSTRUCTIONS

Product Engineering & Development

95449-094  
04/26/13

CONFIDENTIAL AND PROPRIETARY INFORMATION  
KAWNEER COMPANY INC.

THESE DRAWINGS ARE THE SOLE AND EXCLUSIVE PROPERTY OF KAWNEER AND CONTAIN SENSITIVE, PRIVILEGED OR CONFIDENTIAL INFORMATION WHICH MAY BE USED ONLY FOR ITS BENEFIT. THE DISCLOSURE OF THESE DRAWINGS TO UNAUTHORIZED PERSONS IS STRICTLY PROHIBITED. THIS DOCUMENT AND ALL COPIES MUST BE RETURNED UPON DEMAND.  
© COPYRIGHT KAWNEER COMPANY, INC., 2011

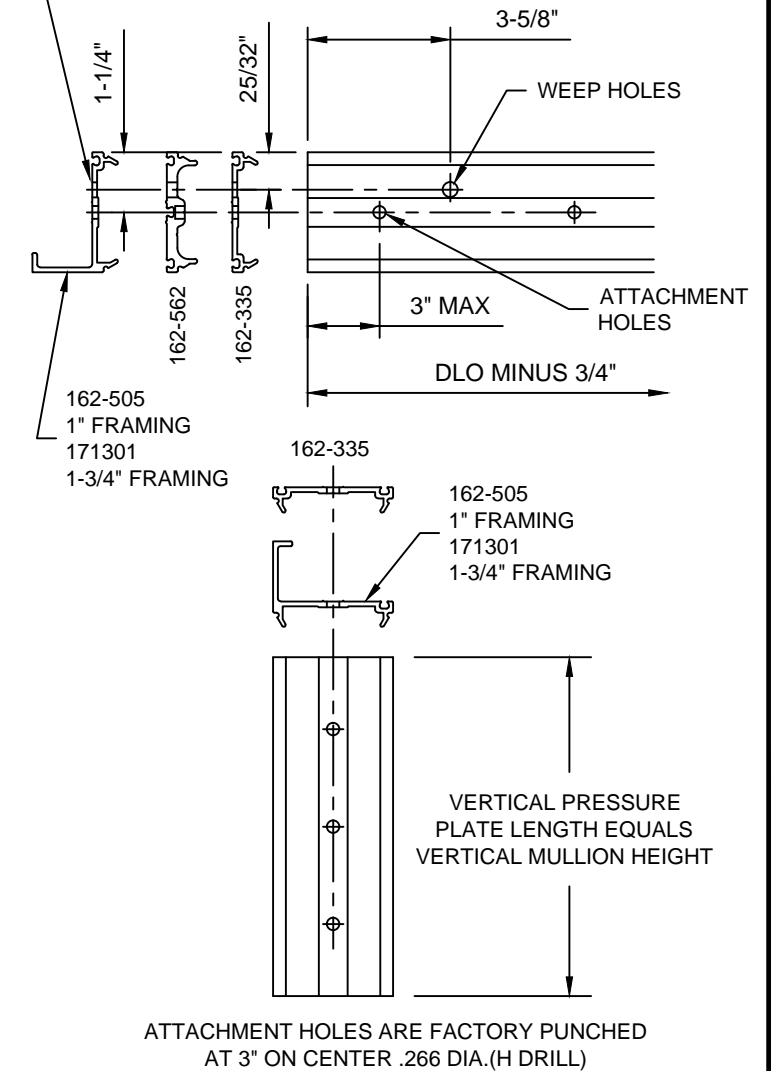
**PRESSURE PLATE FABRICATION**

LENGTH OF HORIZONTAL PRESSURE PLATE  
EQUALS DAYLITE OPENING MINUS 3/4"

ATTACHMENT HOLES ARE FACTORY PUNCHED  
AT 3" ON CENTER .266 DIA. (H DRILL)

WEEP HOLES ARE TO BE LOCATED 3-5/8" FROM  
EACH END AS SHOWN DRILL 5/16" HOLES

SILL POSITION SHOWN. UNLESS NOTED  
OTHERWISE WEEPS NOT REQUIRED AT HEAD



ATTACHMENT HOLES ARE FACTORY PUNCHED  
AT 3" ON CENTER .266 DIA.(H DRILL)

VERTICAL PRESSURE  
PLATE LENGTH EQUALS  
VERTICAL MULLION HEIGHT



1600UT SYSTEM 1  
STOCK LENGTH  
INSTRUCTIONS

Product Engineering & Development

95449-094  
04/26/13

**PERIMETER ANCHORING**

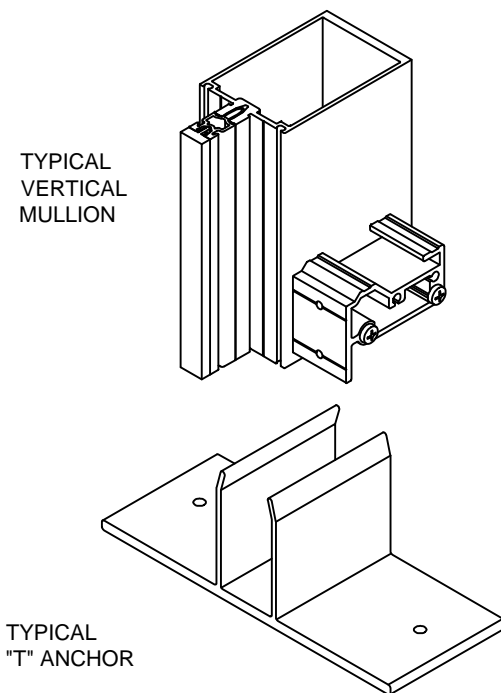
**B** IF THE END REACTION IS 750# AND GREATER  
"F" AND "T" ANCHORS ARE REQUIRED AT  
EACH VERTICAL. PERIMETER MEMBERS MAY BE  
ANCHORED AS SHOWN IN "A"  
DEPENDING UPON THE JOB CONDITIONS.

"F" OR "T" ANCHORS SHOULD NOT BE USED IN  
CONJUNCTION WITH STEEL REINFORCING  
WITHOUT CHECKING THE STRUCTURAL  
INTEGRITY OF THE ANCHORS. CONTACT  
FACTORY ENGINEERING FOR ASSISTANCE.

"F" ANCHORS CAN NOT BE USED WITH  
OPEN BACK VERTICAL JAMBS.

"F" ANCHOR FOR JAMBS  
162-308 AT 6" & 6-3/4" SYSTEM  
162-311 AT 7-1/2" & 8-1/4" SYSTEM  
162-354 AT 10-1/2" & 11-1/4" SYSTEM

"T" ANCHOR FOR INTERMEDIATE VERTICAL  
162-309 AT 6" & 6-3/4" SYSTEM  
162-312 AT 7-1/2" & 8-1/4" SYSTEM  
162-355 AT 10-1/2" & 11-1/4" SYSTEM



FASTENER PREPS AS REQUIRED.  
CONTACT FACTORY ENGINEERING  
FOR ASSISTANCE.

**C** HEAD/SILL SHEAR BLOCK/ANCHORS.  
REFERENCE 171910 INSTALLATION  
INSTRUCTIONS.

STRUCTURAL INTEGRITY OF  
ANCHOR AND FASTENERS MUST BE  
CHECKED BY FACTORY ENGINEERS.

PERIMETER MEMBERS MAY BE ANCHORED AS  
SHOWN IN METHODS "A" DEPENDING UPON  
THE JOB CONDITIONS.

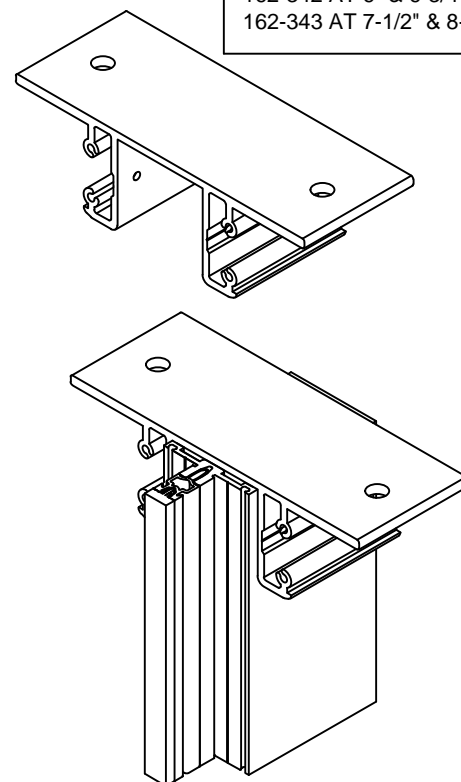
USE THIS SHEAR BLOCK WITH OPEN BACK  
HORIZONTALS WHEN POSSIBLE. IF TUBULAR  
HORIZONTALS ARE USED A NOTCH IS  
REQUIRED. REFERENCE FABRICATION  
DETAILS ON SHEET #4.

VERTICAL HOLE PREPS ARE THE SAME AS  
TYPICAL SHEAR BLOCKS.

STRUCTURAL SHIMMING IS REQUIRED  
AT SILL TO ACCOMPLISH DESIGNED  
PERIMETER SEAL WIDTH.

JAMB SHEAR BLOCK/ANCHOR  
162-314 AT 6" & 6-3/4" SYSTEM  
162-315 AT 7-1/2" & 8-1/4" SYSTEM

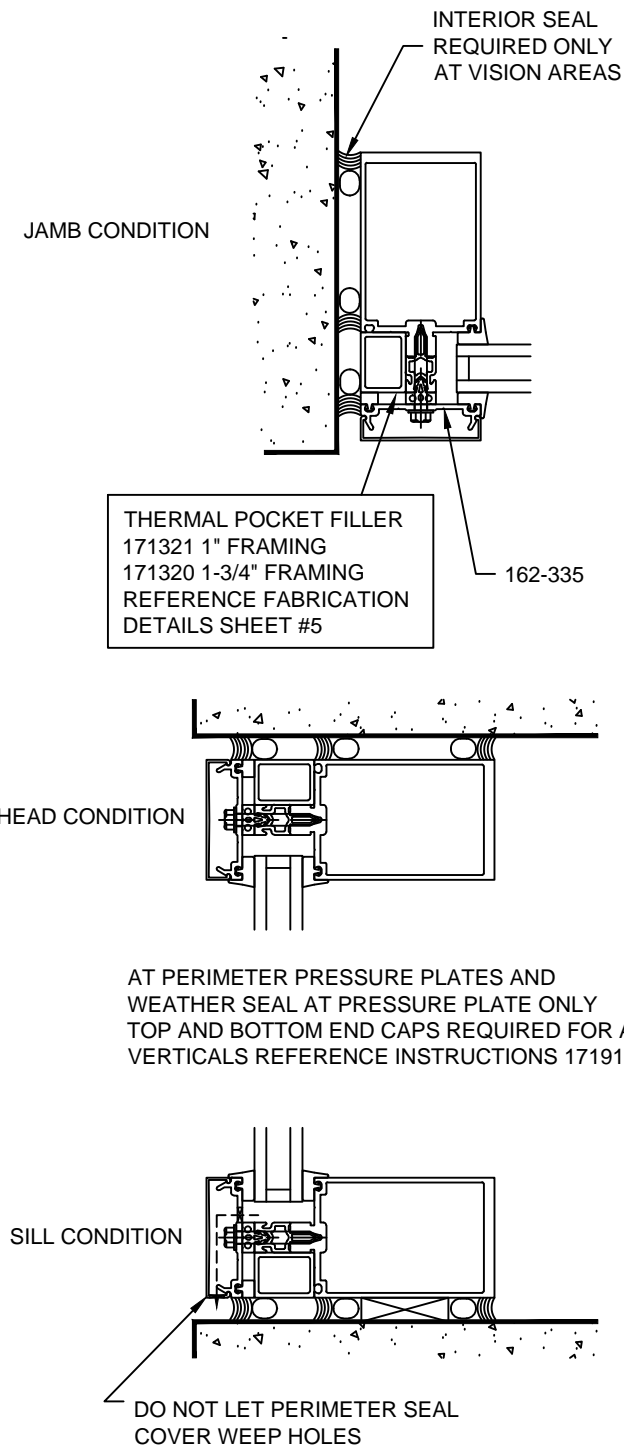
MULLION SHEAR BLOCK/ANCHOR  
162-342 AT 6" & 6-3/4" SYSTEM  
162-343 AT 7-1/2" & 8-1/4" SYSTEM



TYPICAL VERTICAL MULLION

THERMAL POCKET FILLERS WITH INTERMEDIATE  
PRESSURE PLATES MAY ALSO BE USED INSTEAD  
OF PERIMETER PRESSURE PLATES WHEN USING  
PERIMETER ANCHORING A, B, & C.

REFERENCE FABRICATION DETAILS ON SHEET #5.



**PRESSURE PLATE FABRICATION**

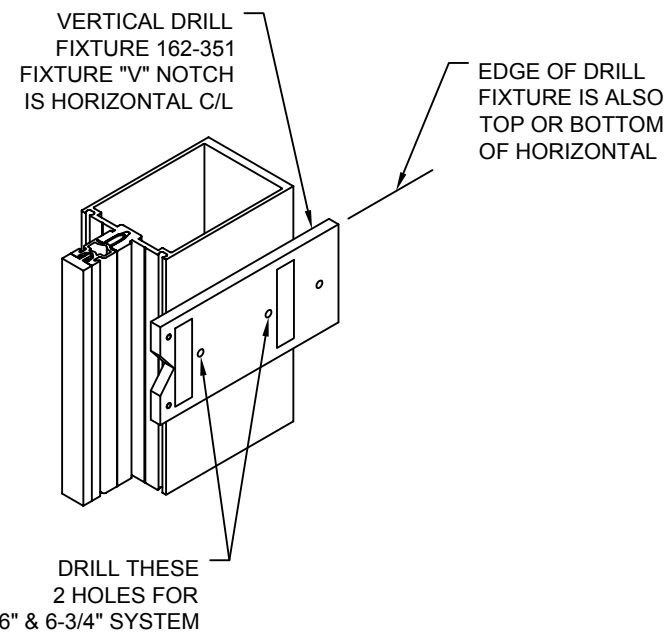
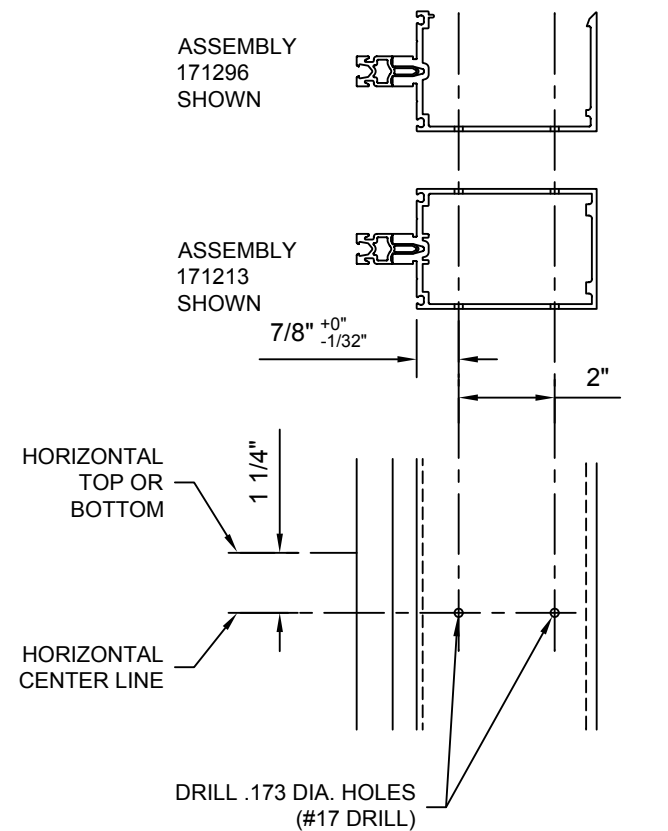
FOR FIBERGLASS PRESSURE PLATES

FABRICATION NOTE:  
FOR BEST RESULTS OPERATOR MUST USE SHARP 3  
FLUTE HIGH STRENGTH STEEL OR COBALT DRILL OR  
CARBIDE "PINEAPPLE CUT" TOOL.

## VERTICAL MULLION FABRICATION

REFERENCE APPROVED SHOP DRAWINGS FOR VERTICAL LENGTHS AND HORIZONTAL LOCATIONS. SPLICE FIXNG SCREW, STOP SCREW AND JAMB SIDE F-ANCHOR ALIGNMENT PREPS ARE ALL SIMILAR TO PREPS NOTED BELOW. REFERENCE SHOP DRAWINGS AND 171910 INSTRUCTIONS.

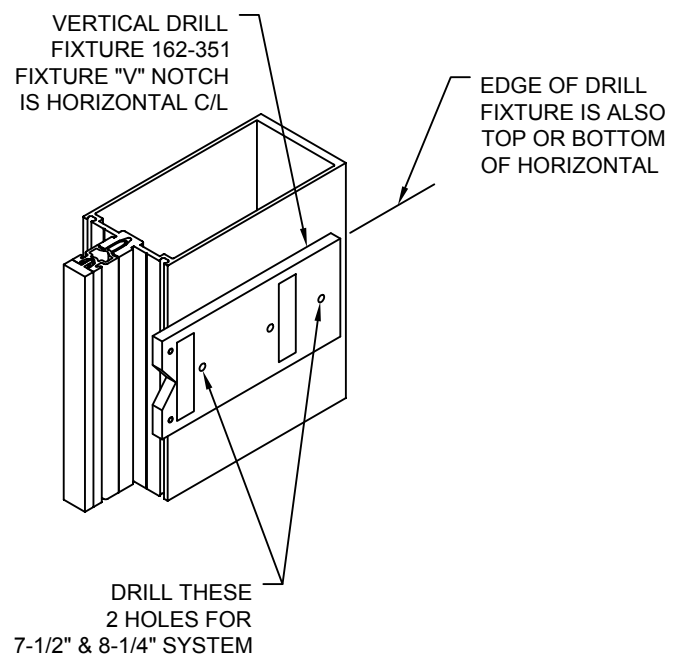
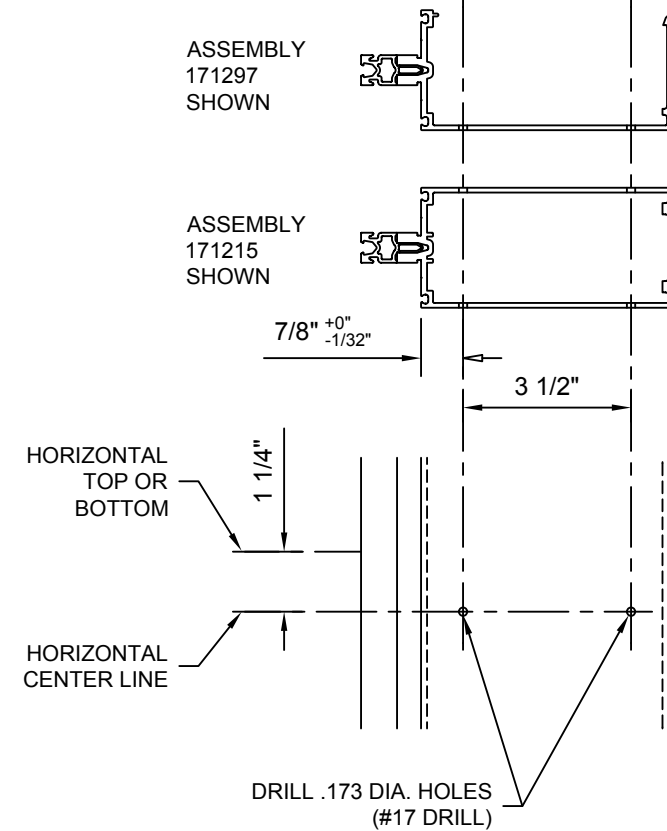
6" SYSTEM SHOWN  
6-3/4" SYSTEM SIMILAR



## VERTICAL MULLION FABRICATION

REFERENCE APPROVED SHOP DRAWINGS FOR VERTICAL LENGTHS AND HORIZONTAL LOCATIONS. SPLICE FIXNG SCREW, STOP SCREW AND JAMB SIDE F-ANCHOR ALIGNMENT PREPS ARE ALL SIMILAR TO PREPS NOTED BELOW. REFERENCE SHOP DRAWINGS AND 171910 INSTRUCTIONS.

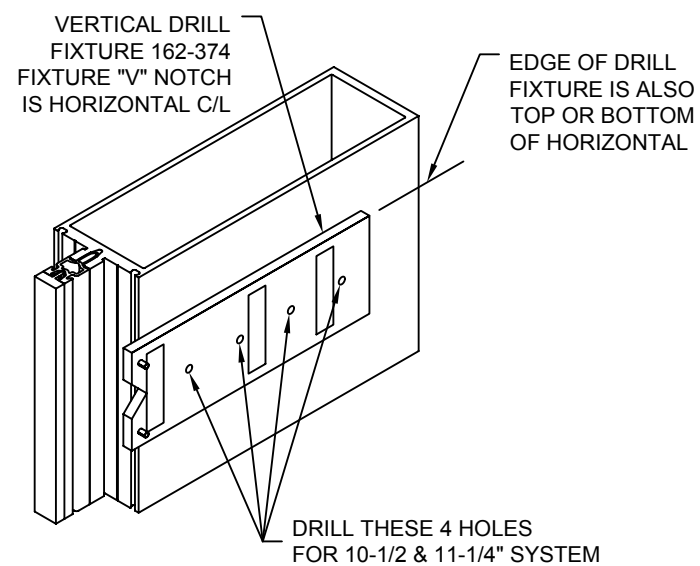
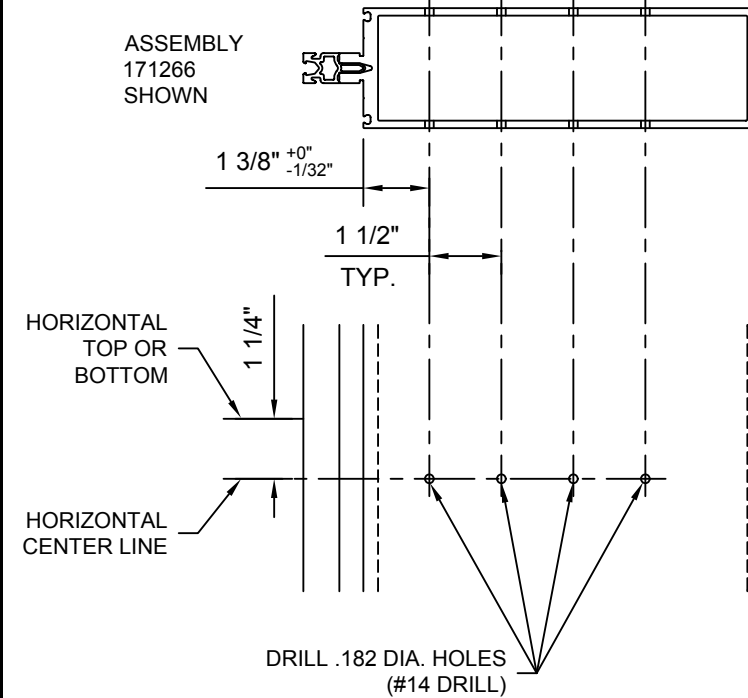
7-1/2" SYSTEM SHOWN  
8-1/4" SYSTEM SIMILAR



## VERTICAL MULLION FABRICATION

REFERENCE APPROVED SHOP DRAWINGS FOR VERTICAL LENGTHS AND HORIZONTAL LOCATIONS. SPLICE FIXNG SCREW, STOP SCREW AND JAMB SIDE F-ANCHOR ALIGNMENT PREPS ARE ALL SIMILAR TO PREPS NOTED BELOW. REFERENCE SHOP DRAWINGS AND 171910 INSTRUCTIONS.

10-1/2" SYSTEM SHOWN  
11-1/4" SYSTEM SIMILAR



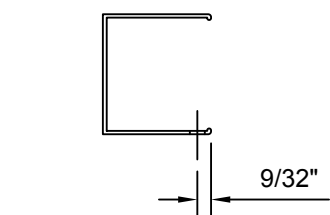
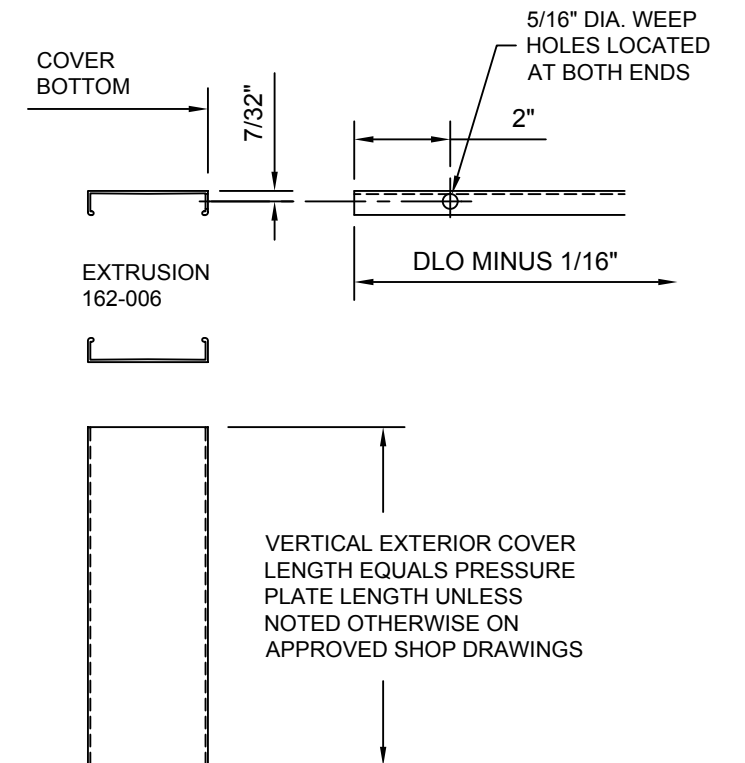
171912 (SHEET 03 OF 05)

CONFIDENTIAL AND PROPRIETARY INFORMATION  
KAWNEER COMPANY INC.

THESE DRAWINGS ARE THE SOLE AND EXCLUSIVE PROPERTY OF KAWNEER AND CONTAIN SENSITIVE, PRIVILEGED OR CONFIDENTIAL INFORMATION WHICH MAY BE USED ONLY FOR ITS BENEFIT. THE DISCLOSURE OF THESE DRAWINGS TO UNAUTHORIZED PERSONS IS STRICTLY PROHIBITED. THIS DOCUMENT AND ALL COPIES MUST BE RETURNED UPON DEMAND.  
© COPYRIGHT KAWNEER COMPANY, INC., 2011

## EXTERIOR COVER FABRICATION

LENGTH OF HORIZONTAL COVER  
EQUALS DAYLITE OPENING MINUS 1/16".



WEEP LOCATION FOR DEEP AND CUSTOM COVERS

**KAWNEER**

Product Engineering & Development

95449-80  
04/29/11

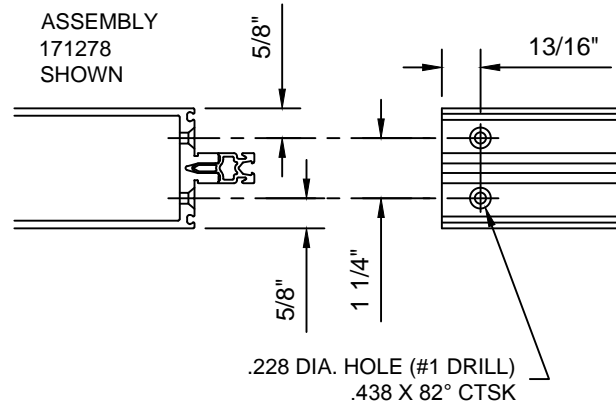
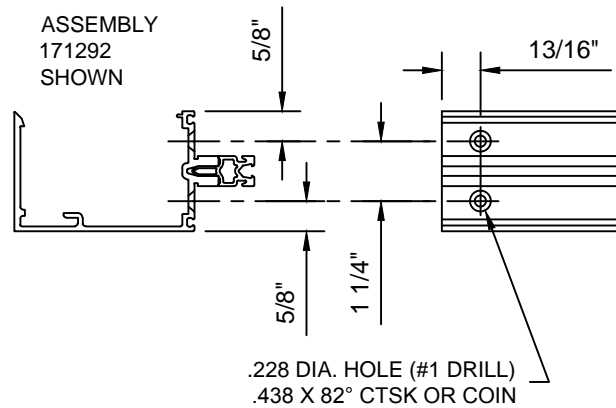
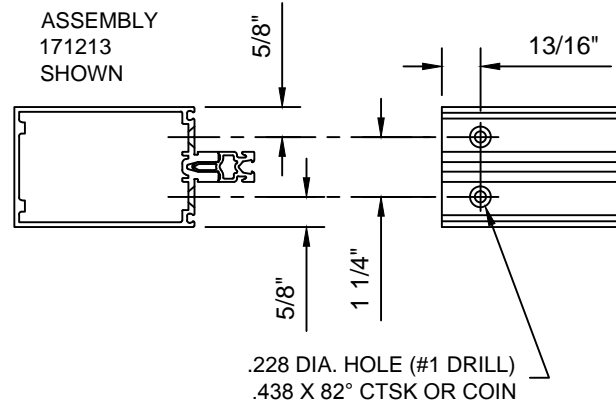
1600UT SYSTEM 1  
STOCK LENGTH  
INSTRUCTIONS

171912 (SHEET 03 OF 05)

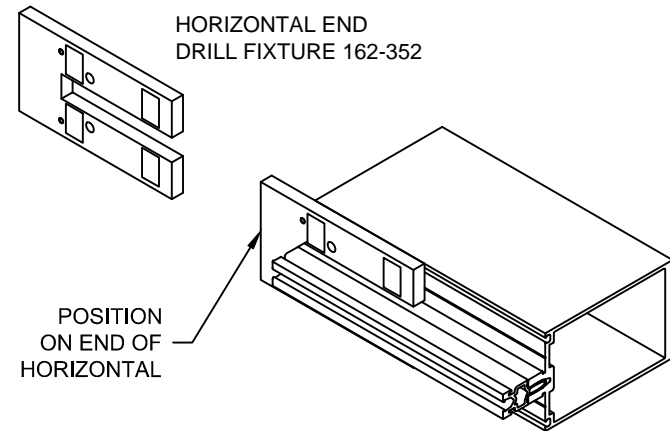
## HORIZONTAL FABRICATION

HORIZONTAL AND OPEN BACK FILLER LENGTH  
EQUALS DAYLITE OPENING MINUS 1/32".

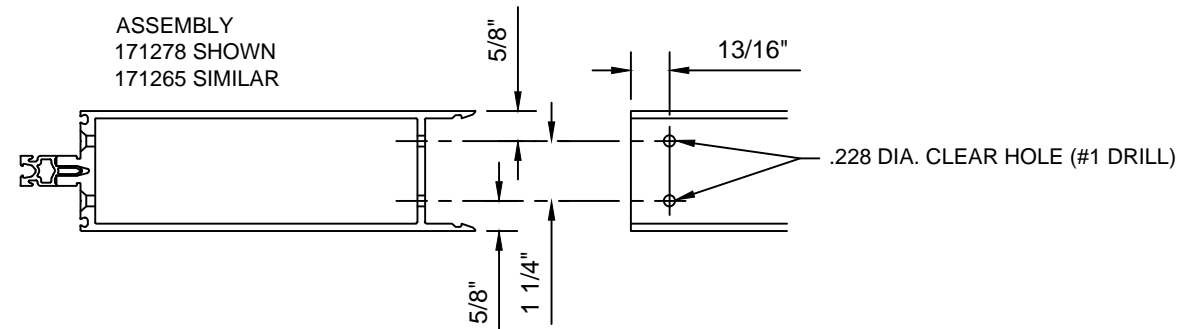
6" & 10-1/2" SYSTEMS SHOWN  
OTHER SYSTEM DEPTHS SIMILAR



## HORIZONTAL FABRICATION

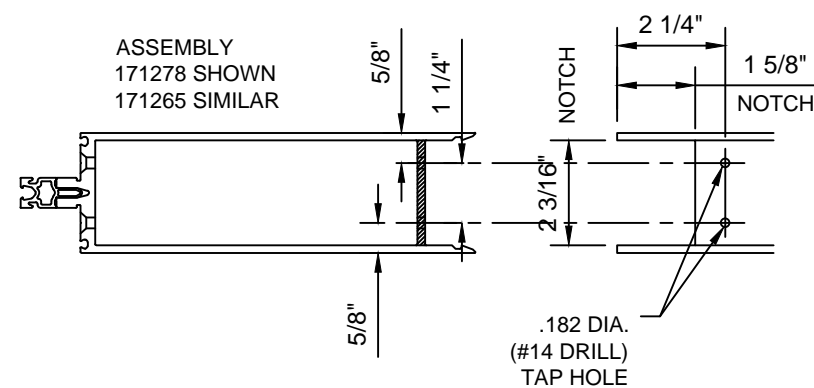


### ADDITIONAL SHEAR BLOCK PREP FOR 10-1/2" & 11-1/4" SYSTEM

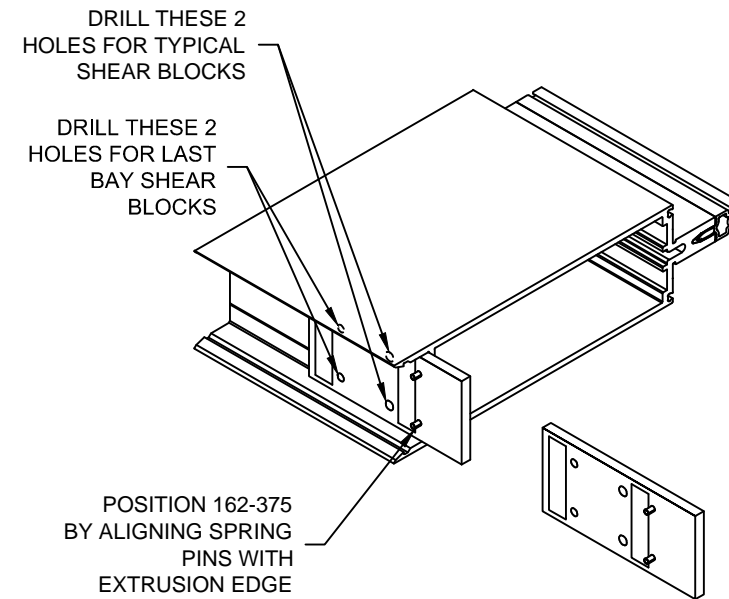


### ADDITIONAL LAST BAY SHEAR BLOCK PREP AND NOTCH FOR 10-1/2" & 11-1/4" SYSTEM

NOTCH MUST BE MADE AFTER LAST BAY SHEAR BLOCK HOLE PREPS.



## HORIZONTAL FABRICATION



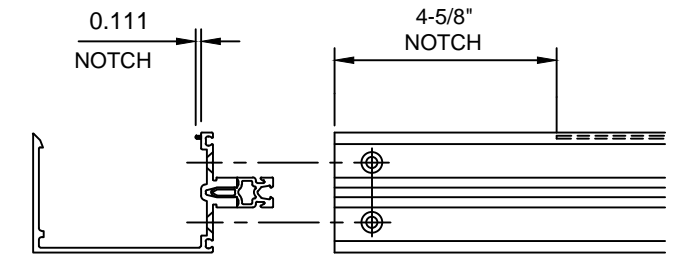
171912 (SHEET 04 OF 05)

CONFIDENTIAL AND PROPRIETARY INFORMATION  
KAWNEER COMPANY INC.

THESE DRAWINGS ARE THE SOLE AND EXCLUSIVE PROPERTY OF KAWNEER AND CONTAIN SENSITIVE, PRIVILEGED OR CONFIDENTIAL INFORMATION WHICH MAY BE USED ONLY FOR ITS BENEFIT. THE DISCLOSURE OF THESE DRAWINGS TO UNAUTHORIZED PERSONS IS STRICTLY PROHIBITED. THIS DOCUMENT AND ALL COPIES MUST BE RETURNED UPON DEMAND.  
© COPYRIGHT KAWNEER COMPANY, INC., 2011

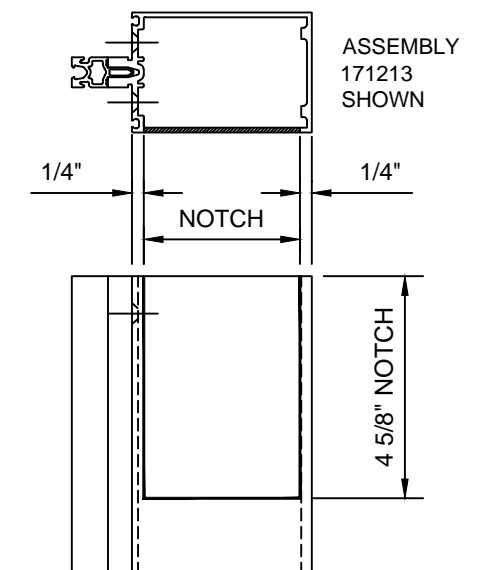
## HORIZONTAL FABRICATION

OPEN BACK HORIZONTAL NOTCH FOR "F" SHEAR  
BLOCK AT TYPE "C" ANCHORING.



ASSEMBLY  
171296  
SHOWN

TUBULAR HORIZONTAL NOTCH FOR "F" SHEAR  
BLOCK AT TYPE "C" ANCHORING.



**KAWNEER**

1600UT SYSTEM 1  
STOCK LENGTH  
INSTRUCTIONS

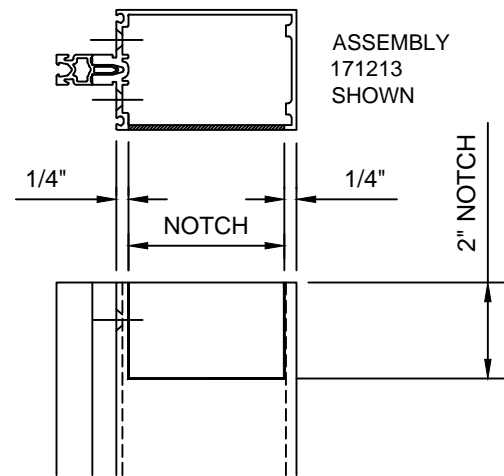
Product Engineering & Development

95449-094  
04/26/13

171912 (SHEET 04 OF 05)

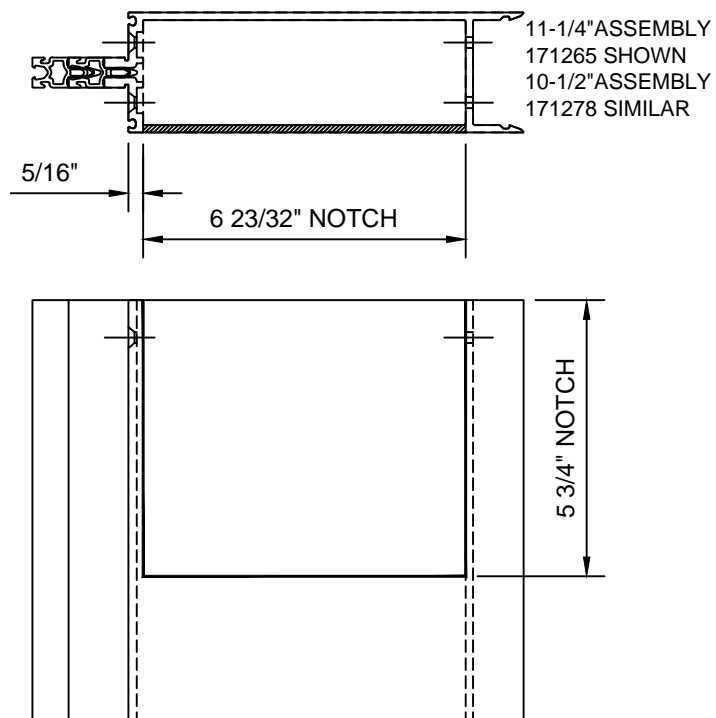
HORIZONTAL FABRICATION

LAST BAY HORIZONTAL NOTCH FOR SHEAR BLOCK AT TYPE "A" ANCHORING.



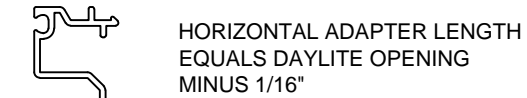
HORIZONTAL FABRICATION

10 -1/2" & 11-1/4" SYSTEM TUBULAR HORIZONTAL NOTCH AT TYPE "B" ANCHORING.

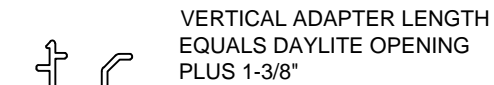


ADAPTER FABRICATION

SPANDREL ADAPTERS ARE SQUARE CUT



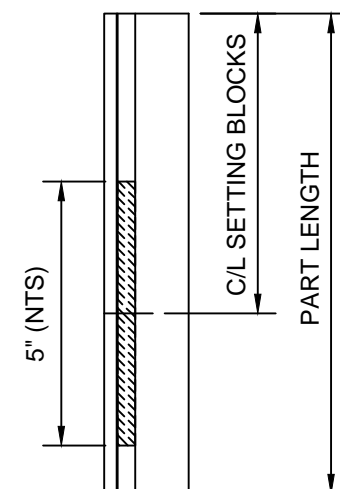
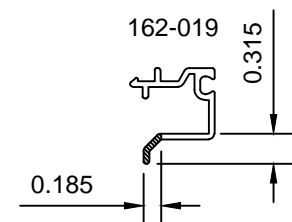
EXTRUSION  
162-019



EXTRUSION  
162-019  
BELOW A VERTICAL SPLICE,  
VERTICAL ADAPTER LENGTH  
EQUALS DAYLITE OPENING  
PLUS 3/16"

ADAPTER FABRICATION

1-3/4" FRAME HORIZONTAL  
SPANDREL ADAPTERS  
MUST BE NOTCHED AT  
EACH END TO CLEAR  
SETTING BLOCK CHAIRS.



PERIMETER FABRICATION

THERMAL POCKET FILLERS 171321 (1" FRAMING) & 171320 (1-3/4" FRAMING) ARE SQUARE CUT



FILLER  
171321



FILLER  
171320



1600UT SYSTEM 1  
STOCK LENGTH  
INSTRUCTIONS

Product Engineering & Development

95449-094  
04/26/13