

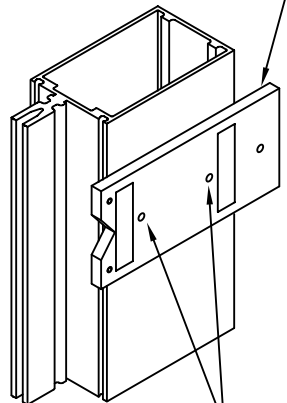
USE THESE INSTRUCTIONS IN CONJUNCTION WITH THE FOLLOWING INSTRUCTIONS

164-973 SYSTEM 4 INSTALLATION

VERTICAL MULLION FABRICATION

REFERENCE APPROVED SHOP DRAWINGS FOR VERTICAL LENGTHS AND HORIZONTAL LOCATIONS.

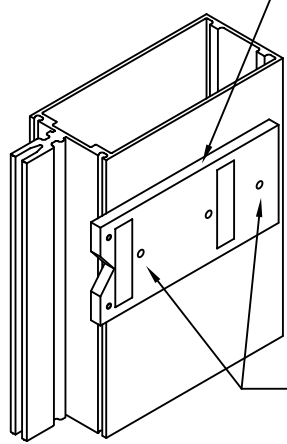
VERTICAL DRILL FIXTURE 163-324
FIXTURE "V" NOTCH IS PREP C/L



6" SYSTEM

AT 6" SYSTEM DRILL THESE 2 HOLES

VERTICAL DRILL FIXTURE 163-324
FIXTURE "V" NOTCH IS PREP C/L



7-1/2" SYSTEM

AT 7-1/2" SYSTEM DRILL THESE 2 HOLES

VERTICAL MULLION FABRICATION

REFERENCE APPROVED SHOP DRAWINGS FOR VERTICAL LENGTHS AND HORIZONTAL LOCATIONS.

6" SYSTEM

OPTIONAL JAMB VERTICAL 164-070

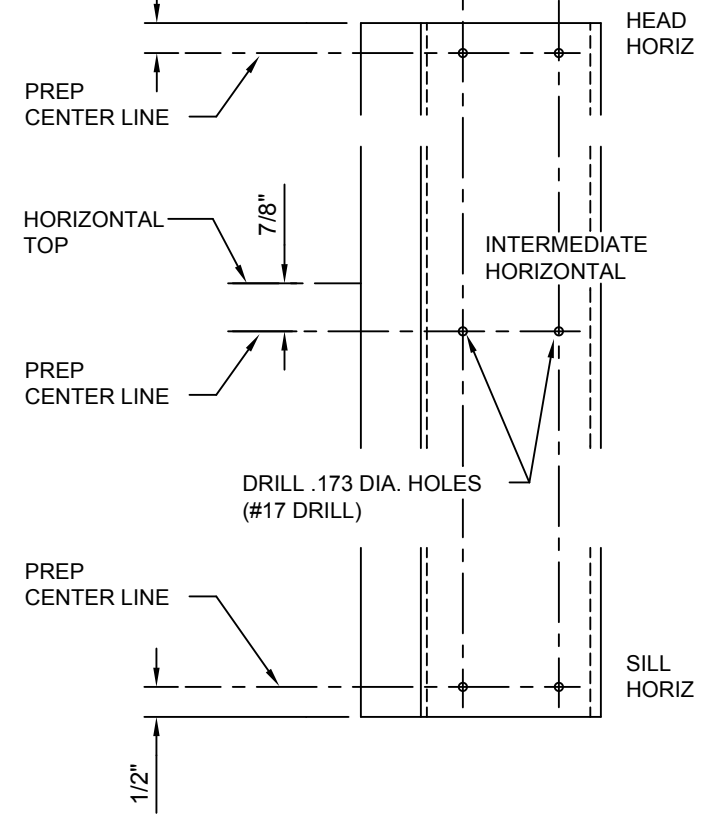
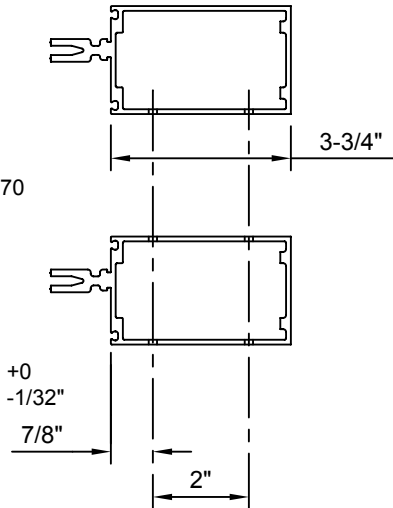
SHALLOW POCKET WALL SIDE

DEEP POCKET GLASS SIDE

INTERMEDIATE OR JAMB VERTICAL ASSEMBLY 164-070

SHALLOW POCKET LEFT SIDE

DEEP POCKET RIGHT SIDE



VERTICAL MULLION FABRICATION

REFERENCE APPROVED SHOP DRAWINGS FOR VERTICAL LENGTHS AND HORIZONTAL LOCATIONS.

7-1/2" SYSTEM

OPTIONAL JAMB VERTICAL 164-071

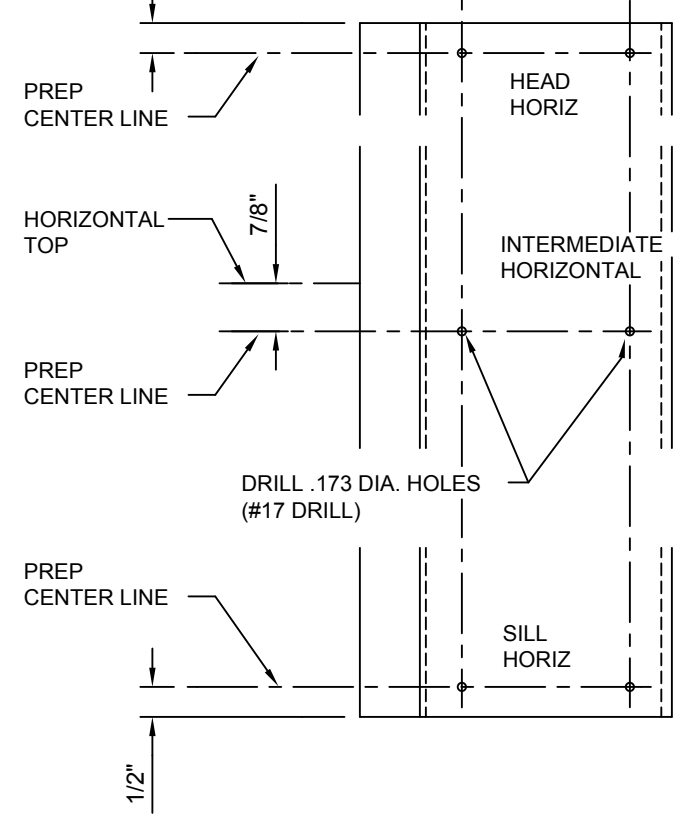
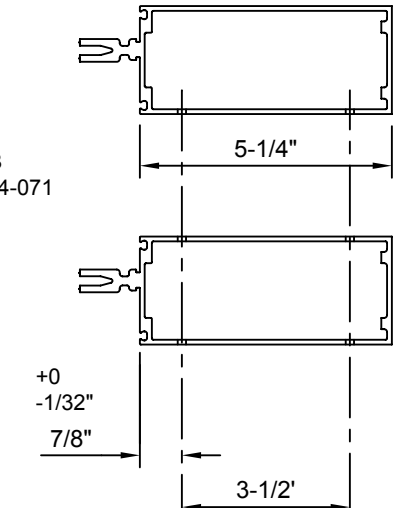
SHALLOW POCKET WALL SIDE

DEEP POCKET GLASS SIDE

INTERMEDIATE OR JAMB VERTICAL ASSEMBLY 164-071

SHALLOW POCKET LEFT SIDE

DEEP POCKET RIGHT SIDE



VERTICAL MULLION FABRICATION

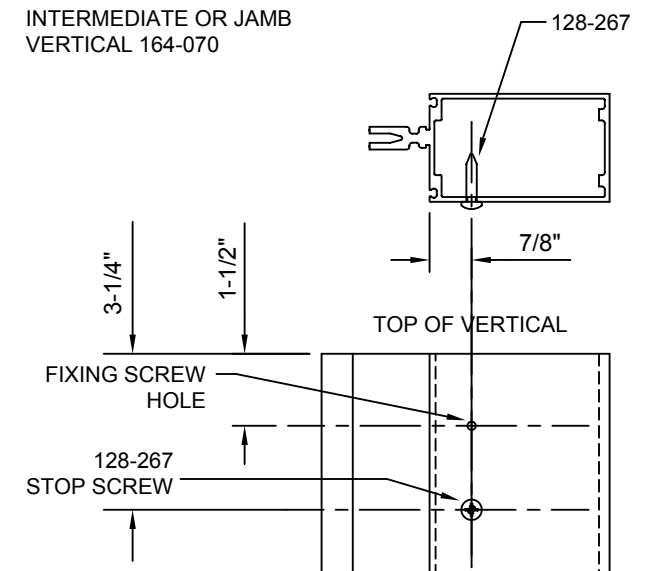
FOR SPLICE SLEEVE FIXING AND STOP SCREWS

DRILL TWO .173 DIA HOLES (#17 DRILL) AS SHOWN

THE TOP HOLE WILL BE FOR THE SLEEVE FIXING SCREW

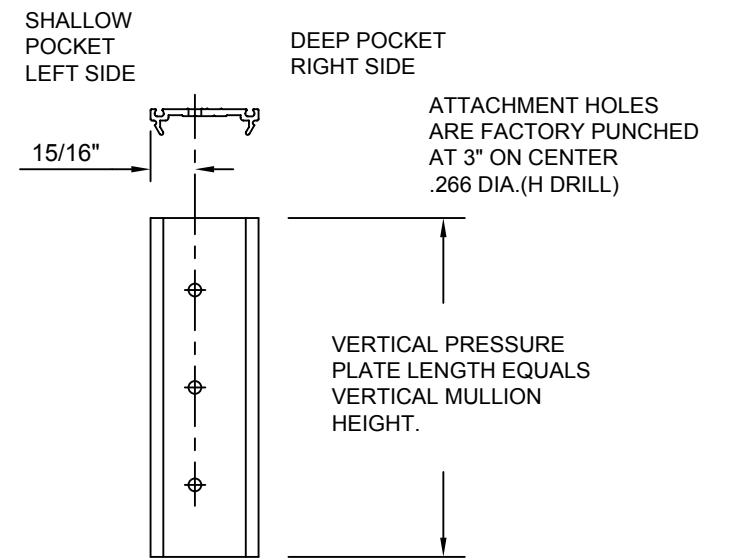
INSTALL STOP SCREW 128-267 IN THE BOTTOM HOLE

INTERMEDIATE OR JAMB VERTICAL 164-070



VERTICAL PRESSURE PLATE FAB

STOCK LENGTH PART NUMBER 164-319



1600 SYSTEM⁴ PRESSURE PLATE
STOCK LENGTH INSTRUCTIONS

PART NUMBER 164-962 1 OF 4

95468-32
12/07/07

DRAWING:

ORDER:

SHT:

USE THESE INSTRUCTIONS IN CONJUNCTION WITH THE FOLLOWING INSTRUCTIONS

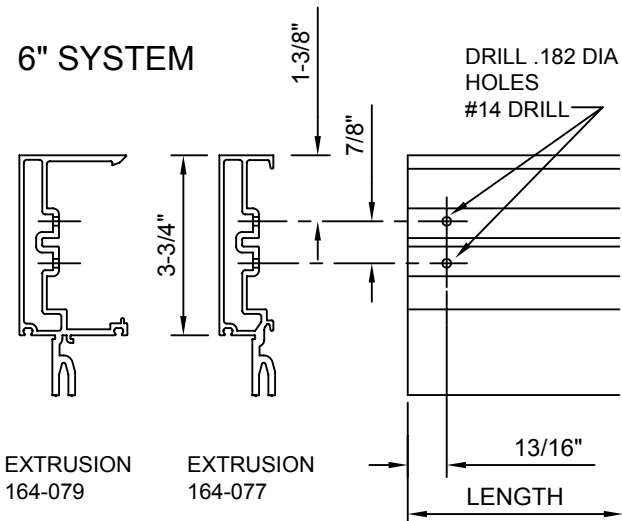
164-973 SYSTEM 4 INSTALLATION

HORIZONTAL FABRICATION

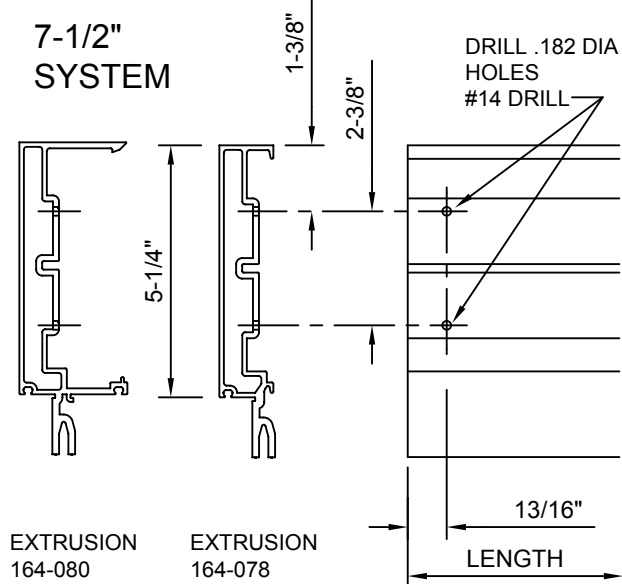
LENGTH OF HORIZONTAL EQUALS DAYLITE OPENING MINUS 1/32".

INTERMEDIATE HORIZONTALS ATTACHMENT HOLES BOTH ENDS

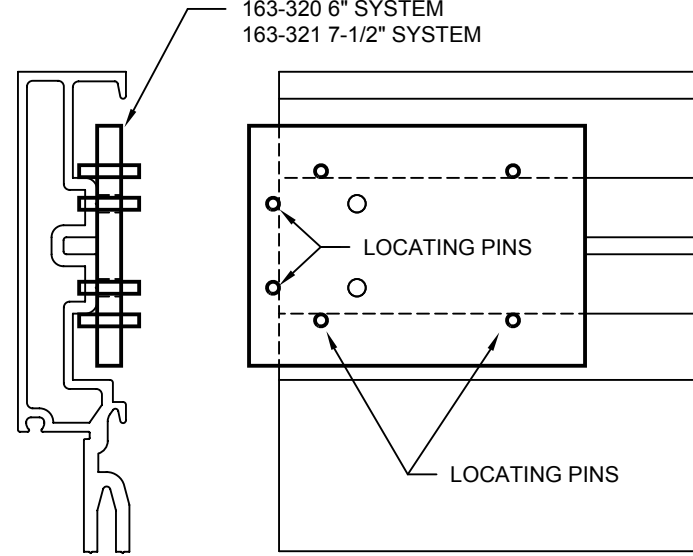
6" SYSTEM



7-1/2" SYSTEM

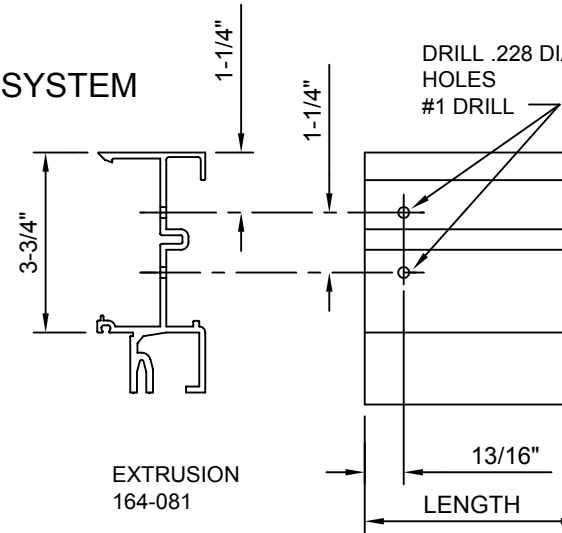


INTERMEDIATE HORIZONTAL DRILL FIXTURE
163-320 6" SYSTEM
163-321 7-1/2" SYSTEM

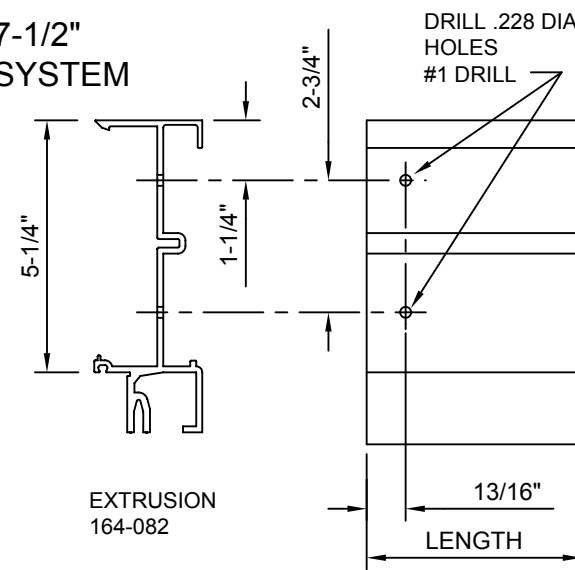


SILL HORIZONTALS ATTACHMENT HOLES BOTH ENDS

6" SYSTEM

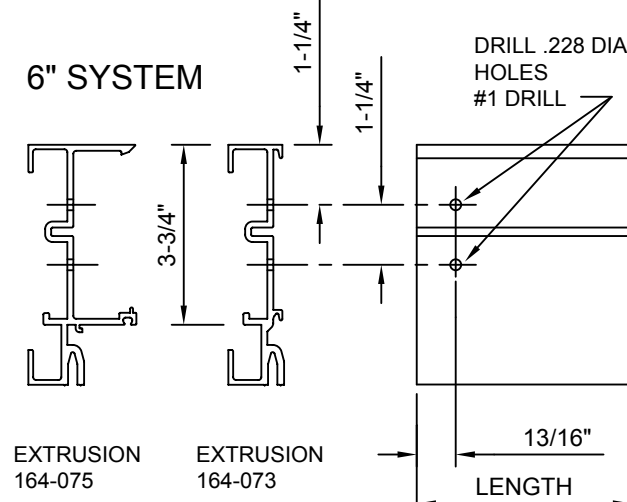


7-1/2" SYSTEM

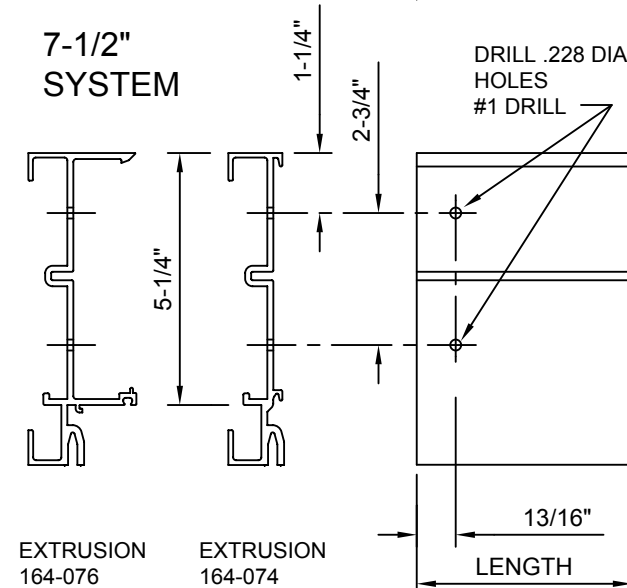


HEAD HORIZONTALS ATTACHMENT HOLES BOTH ENDS

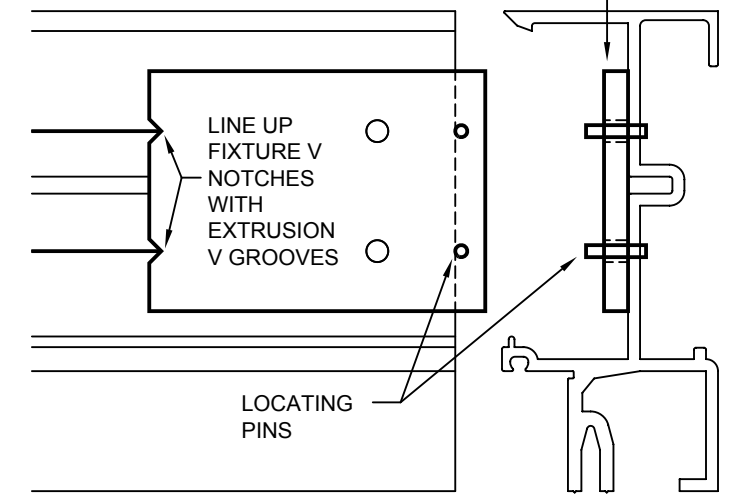
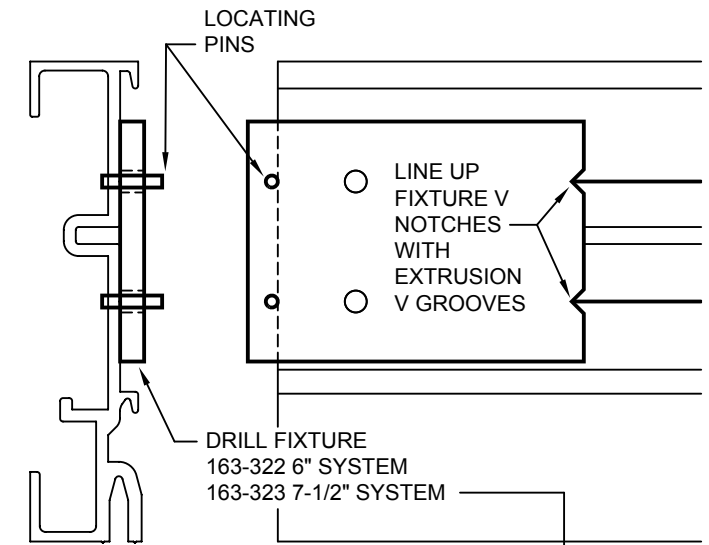
6" SYSTEM



7-1/2" SYSTEM



HEAD AND SILL HORIZONTAL DRILL FIXTURE



1600 SYSTEM⁴ PRESSURE PLATE STOCK LENGTH INSTRUCTIONS

PART NUMBER 164-962 2 OF 4

95468-32 12/07/07

DRAWING:

ORDER:

SHT:

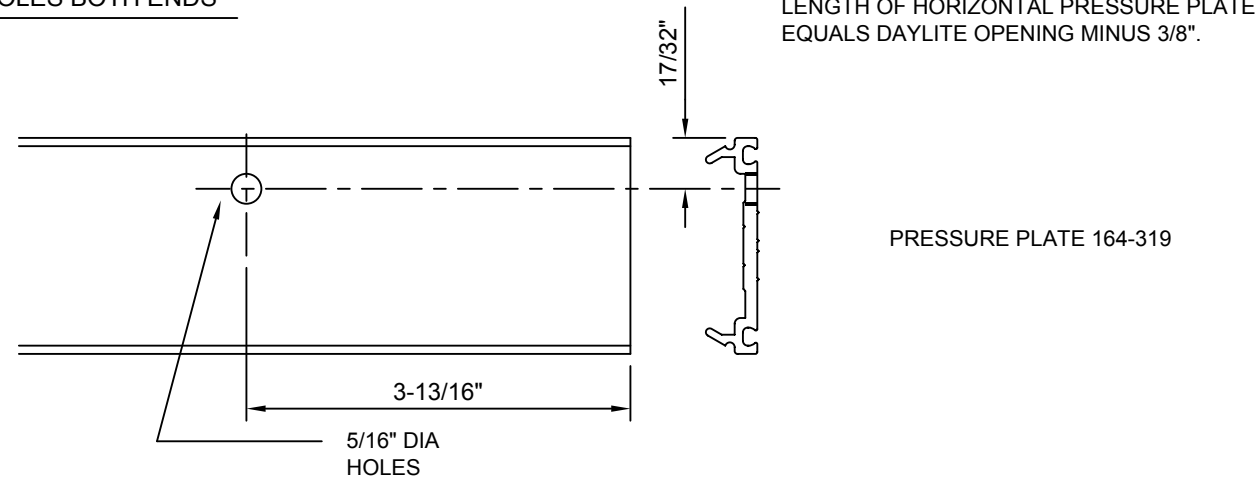
USE THESE INSTRUCTIONS IN CONJUNCTION WITH THE FOLLOWING INSTRUCTIONS

164-973 SYSTEM 4 INSTALLATION

INTERMEDIATE AND SILL PRESSURE PLATE

WEEP HOLES BOTH ENDS

HORIZONTAL PRESSURE PLATE FABRICATION



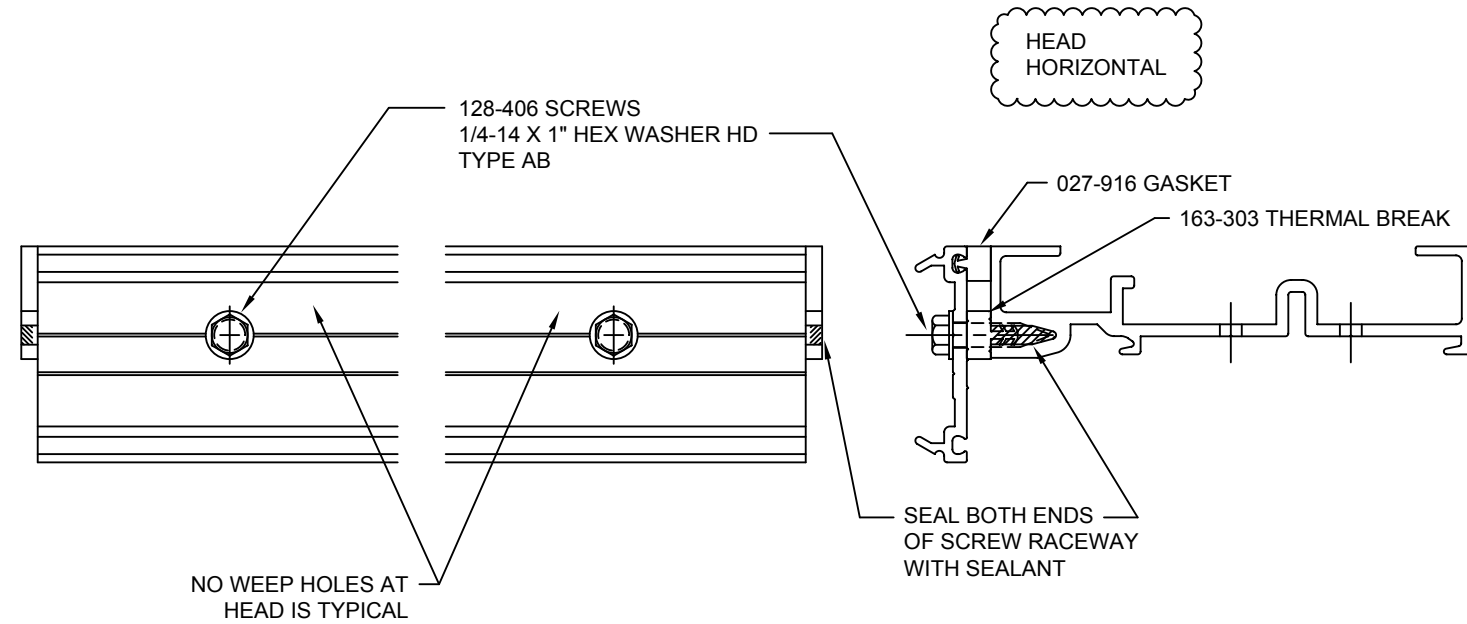
THIS OCCURS AT INTERIOR GLAZING

PRESSURE PLATE APPLICATION

INSTALL GASKET 027-916 AND THERMAL BREAK 163-303 AS SHOWN (PRESSURE PLATE LENGTH)

CENTER PRESSURE PLATE LENGTH WITH HORIZONTAL LENGTH AND INSTALL WITH 128-406 SCREWS A MAXIMUM OF 3" FROM EACH END AND 6" ON CENTER

TORQUE SCREWS 50 TO 60 INCH POUNDS



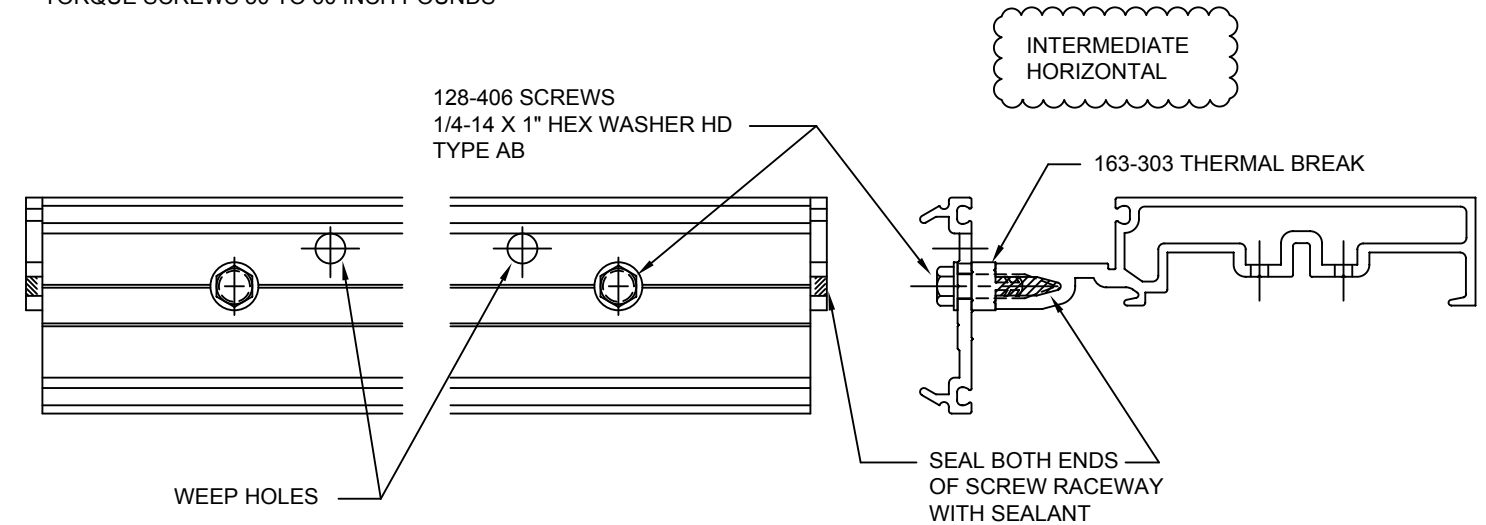
PRESSURE PLATE APPLICATION

INSTALL THERMAL BREAK 163-303 AS SHOWN (PRESSURE PLATE LENGTH)

CENTER PRESSURE PLATE LENGTH WITH HORIZONTAL LENGTH AND INSTALL WITH 128-406 SCREWS A MAXIMUM OF 3" FROM EACH END AND 6" ON CENTER

TORQUE SCREWS 50 TO 60 INCH POUNDS

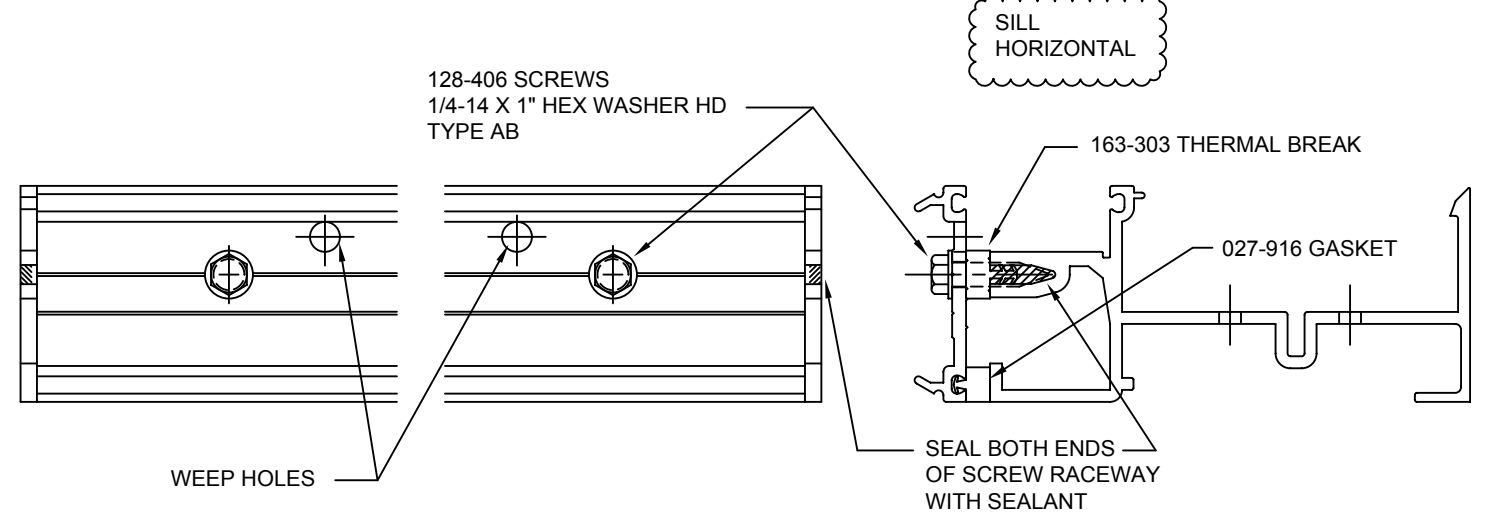
THIS OCCURS AT INTERIOR GLAZING



INSTALL GASKET 027-916 AND THERMAL BREAK 163-303 AS SHOWN (PRESSURE PLATE LENGTH)

CENTER PRESSURE PLATE LENGTH WITH HORIZONTAL LENGTH AND INSTALL WITH 128-406 SCREWS A MAXIMUM OF 3" FROM EACH END AND 6" ON CENTER

TORQUE SCREWS 50 TO 60 INCH POUNDS



1600 SYSTEM⁴ PRESSURE PLATE
STOCK LENGTH INSTRUCTIONS

PART NUMBER
164-962 3 OF 4

95468-32
12/07/07

DRAWING:

ORDER:

SHT:

USE THESE INSTRUCTIONS IN CONJUNCTION WITH THE FOLLOWING INSTRUCTIONS

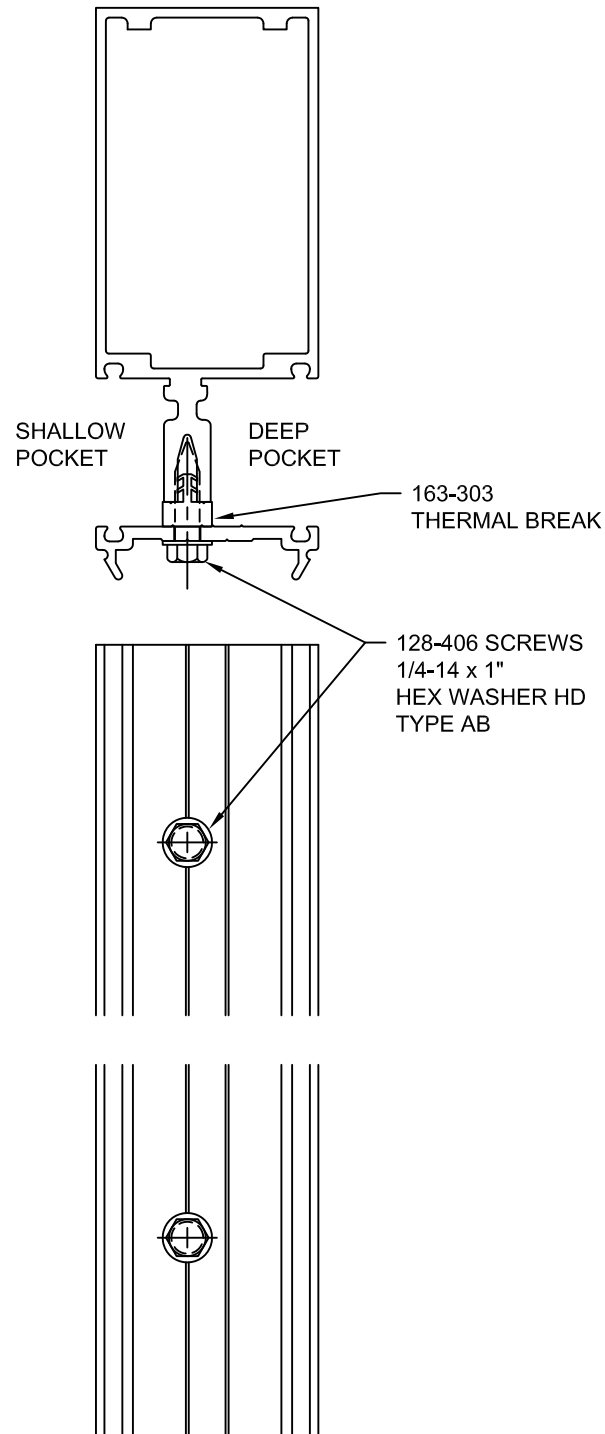
164-973 SYSTEM 4 INSTALLATION

PRESSURE PLATE APPLICATION

INSTALL 163-303 THERMAL BREAK AS SHOWN

INSTALL PRESSURE PLATE WITH 128-406 SCREWS A MAXIMUM OF 3" FROM EACH END AND 9" ON CENTER

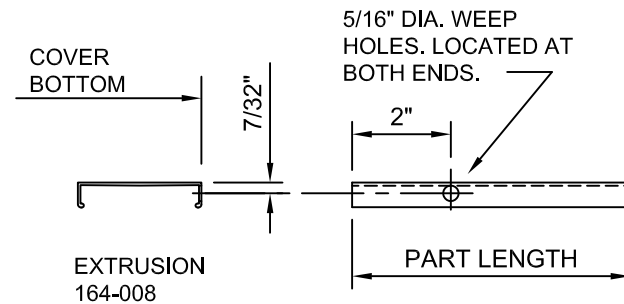
TORQUE SCREWS 50 TO 60 INCH POUNDS



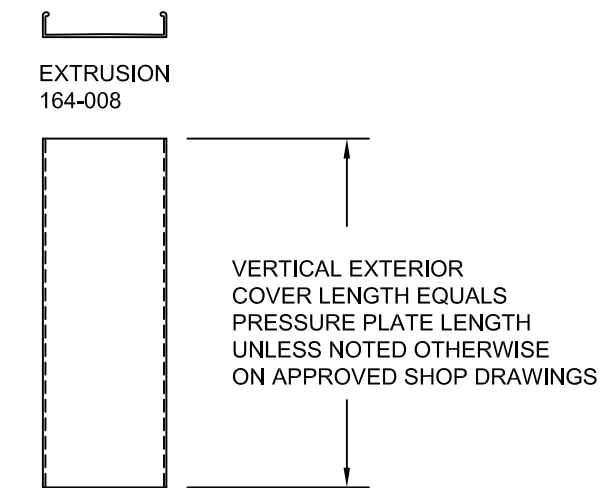
EXTERIOR COVER FABRICATION

LENGTH OF HORIZONTAL COVER EQUALS DAYLITE OPENING MINUS 1/16".

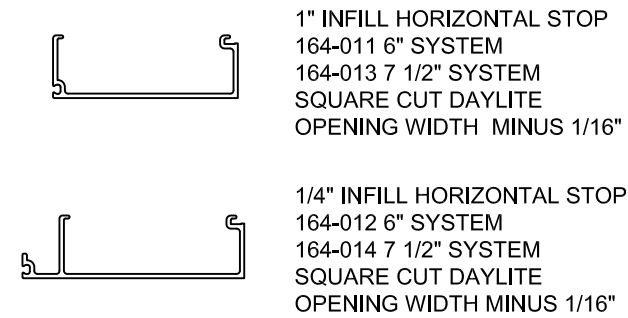
WEEP HOLE BOTH ENDS FOR HEAD, INTERMEDIATE AND SILL HORIZONTAL COVERS



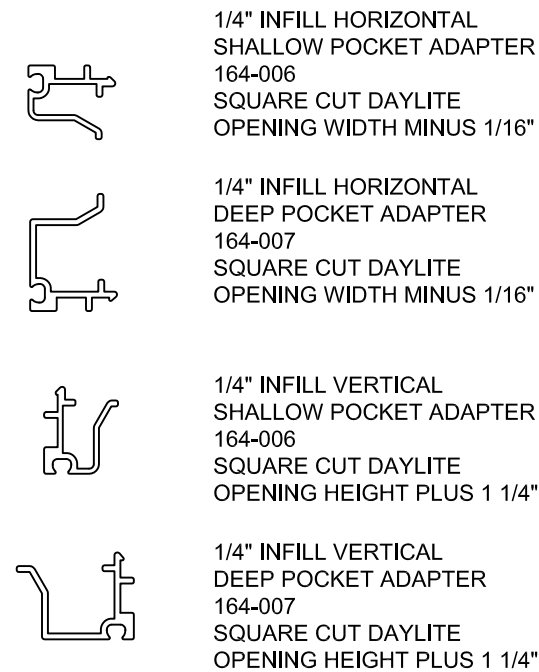
VERTICAL COVERS



INTERIOR STOP FABRICATION



SPANDREL ADAPTER FABRICATION

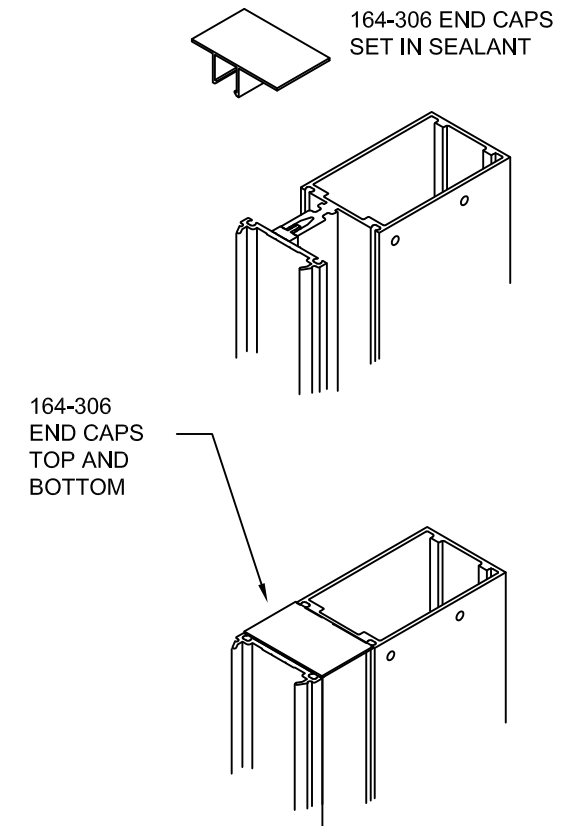


FILLER FABRICATION

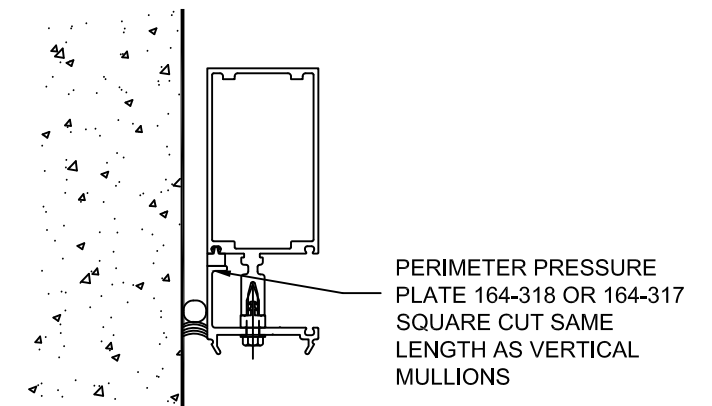


END CAP APPLICATION

TYPICAL VERTICALS



VERTICAL JAMB PERIMETERS



1600 SYSTEM⁴ PRESSURE PLATE STOCK LENGTH INSTRUCTIONS

PART NUMBER 164-962 4 OF 4

95468-039 04/26/13

DRAWING:

ORDER:

SHT: